

CHAMPION®

Claysburg, Pennsylvania



*Built Better
From the Inside Out*



EXPLORER II SERIES HOMES

MAKE YOURSELF AT HOME WITH CHAMPION.

Every manufactured and modular home Champion builds is professionally designed and engineered. Built by craftsmen in a controlled factory environment, our homes are constructed to meet the appropriate national, state or local building code. In addition, we continually inspect our work at every phase of the home construction process to ensure our rigorous quality standards are met. We believe that to build the best, you have to use the best. So we use quality building materials in every home we build.



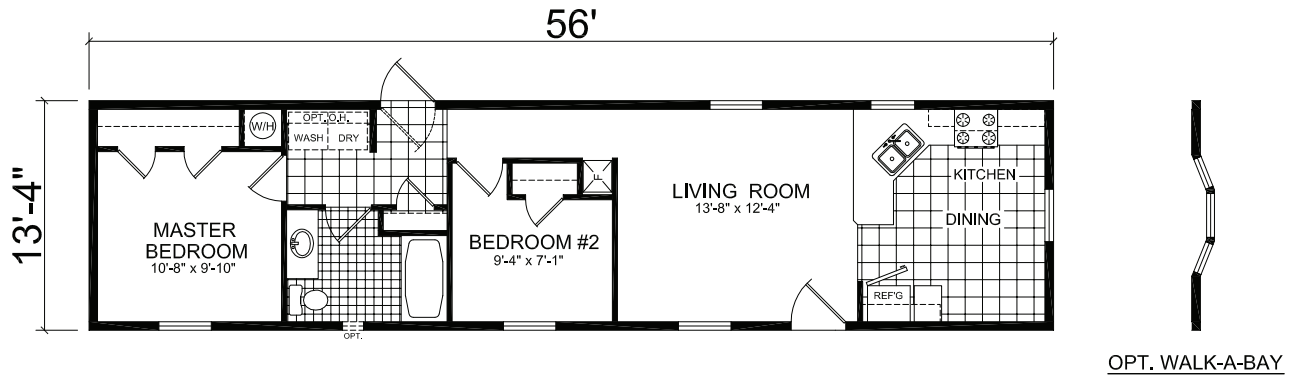


BUILT BETTER FROM THE INSIDE OUT.

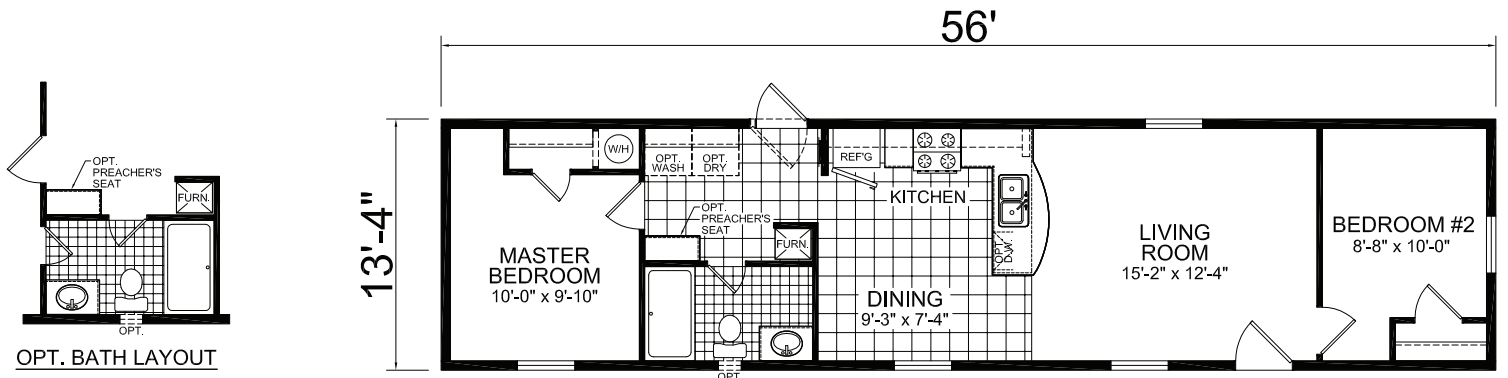
We have a home for everyone, no matter what stage of life you're in. Whether you're a first-time homebuyer, a growing family needing a larger home, or an empty nester wanting to downsize, we have a factory-built design to fit your lifestyle. From active young families on the go to retirees ready to relax and enjoy, our vast selection of floor plans, home décors and options give you the design choices you want to create your dream home.



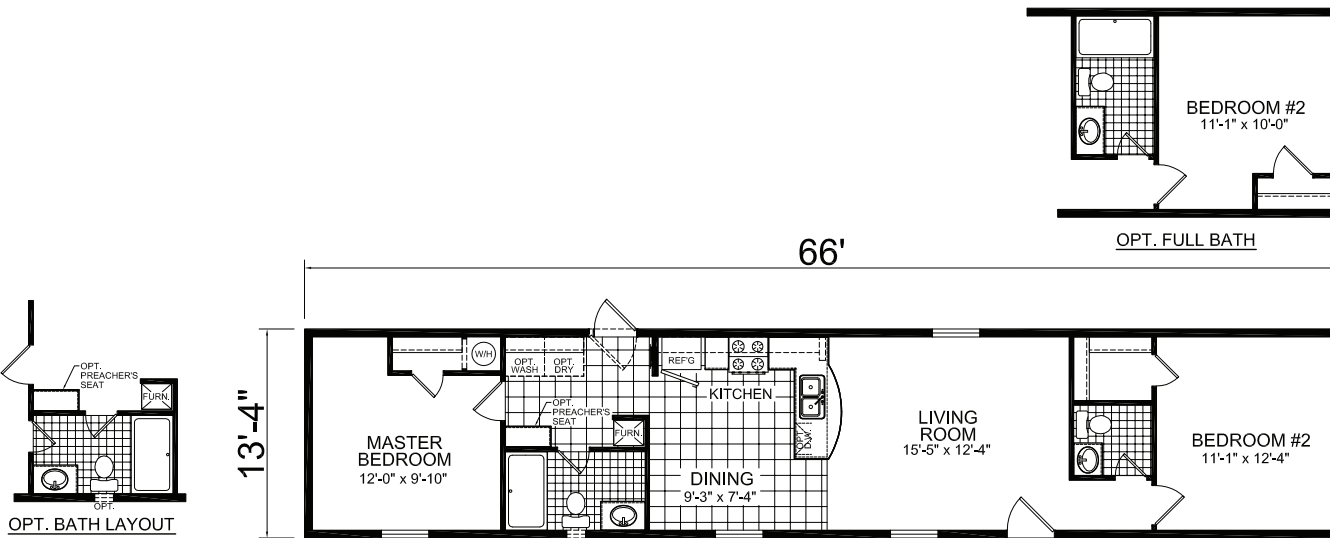
MODEL 264 746 sq.ft. | 2 Bedroom, 1 Bath | 14' X 60'



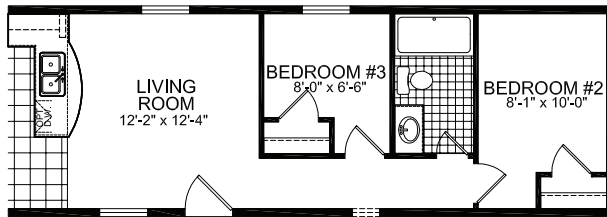
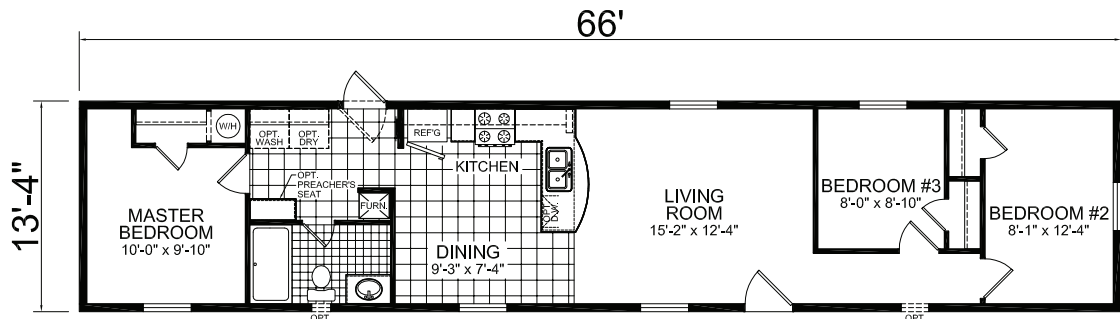
MODEL 414 746 sq.ft. | 2 Bedroom, 1 Bath | 14' X 60'



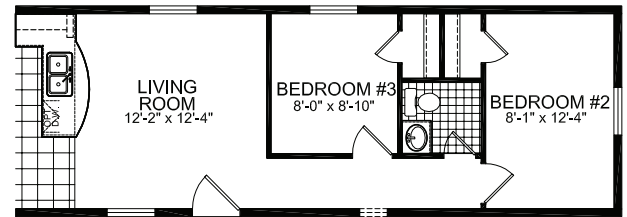
MODEL 014 880 sq.ft. | 2 Bedroom, 1.5 Bath | 14' X 70'



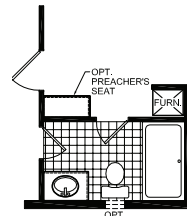
14' X 70' | 3 Bedroom, 1 Bath | 880 sq.ft. **MODEL 015**



OPT. FULL BATH

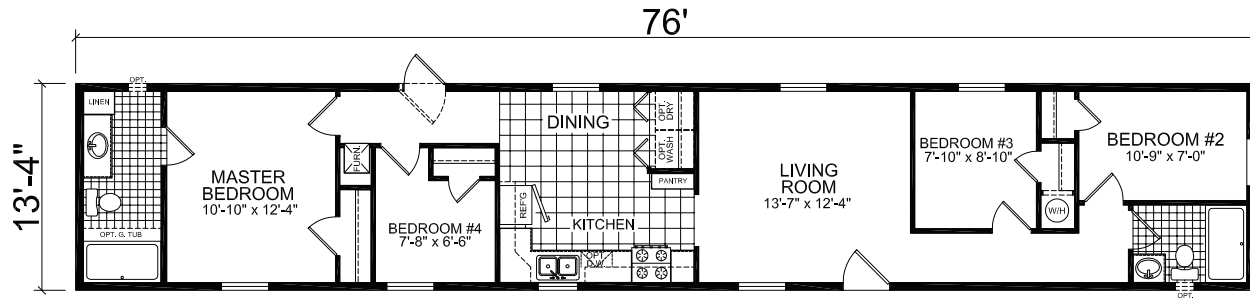


OPT. HALF BATH

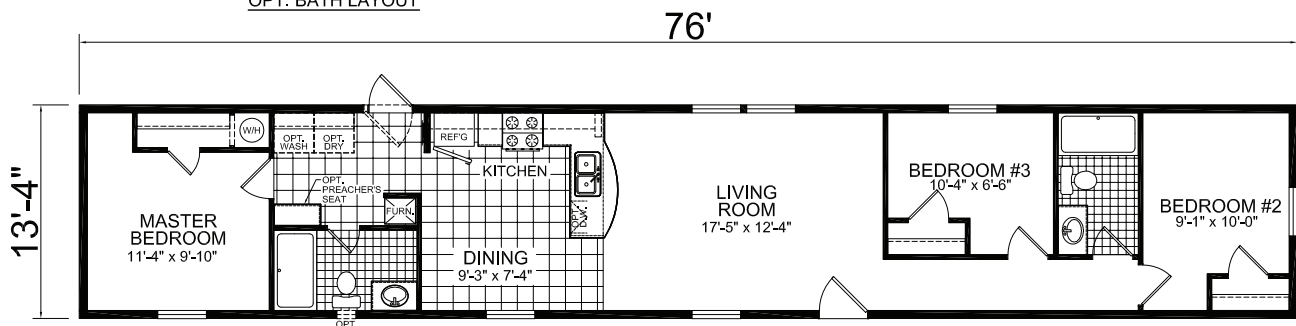
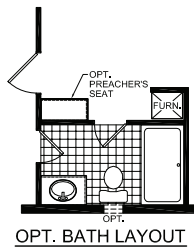


OPT. BATH LAYOUT

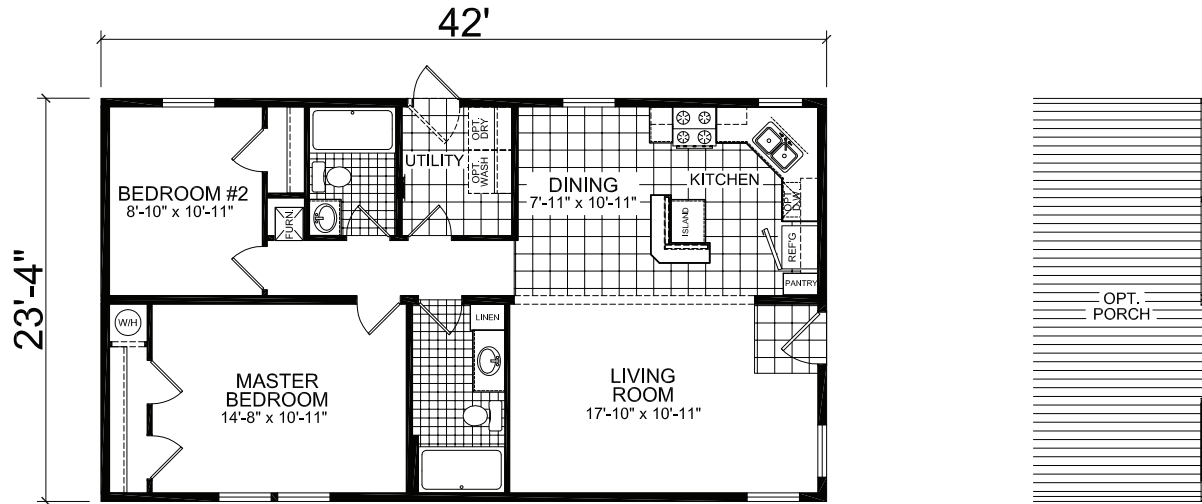
MODEL 721 | 1013 sq.ft. | 4 Bedroom, 2 Bath | 14' X 80'



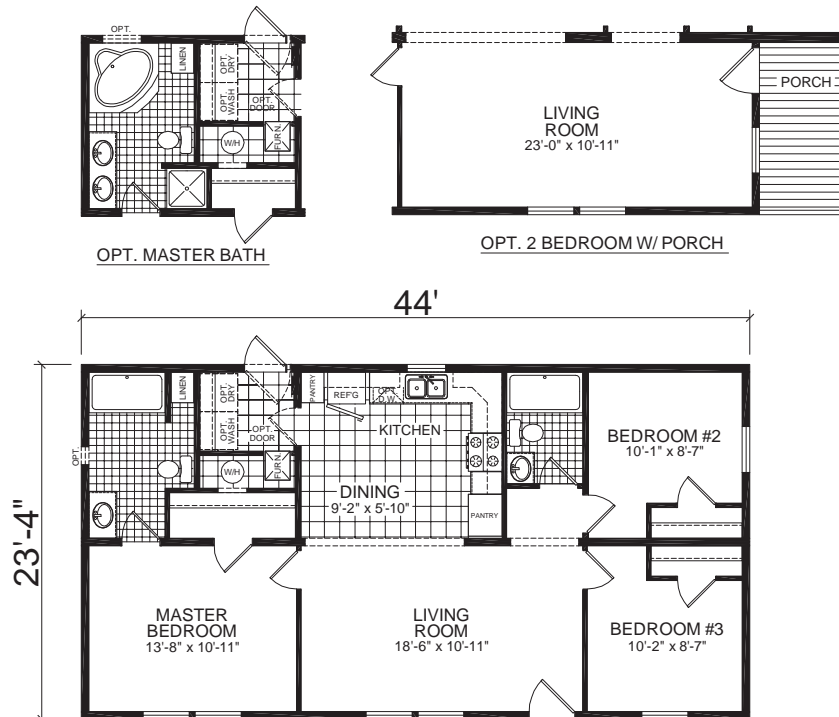
MODEL 108 | 1013 sq.ft. | 3 Bedroom, 2 Bath | 14' X 80'



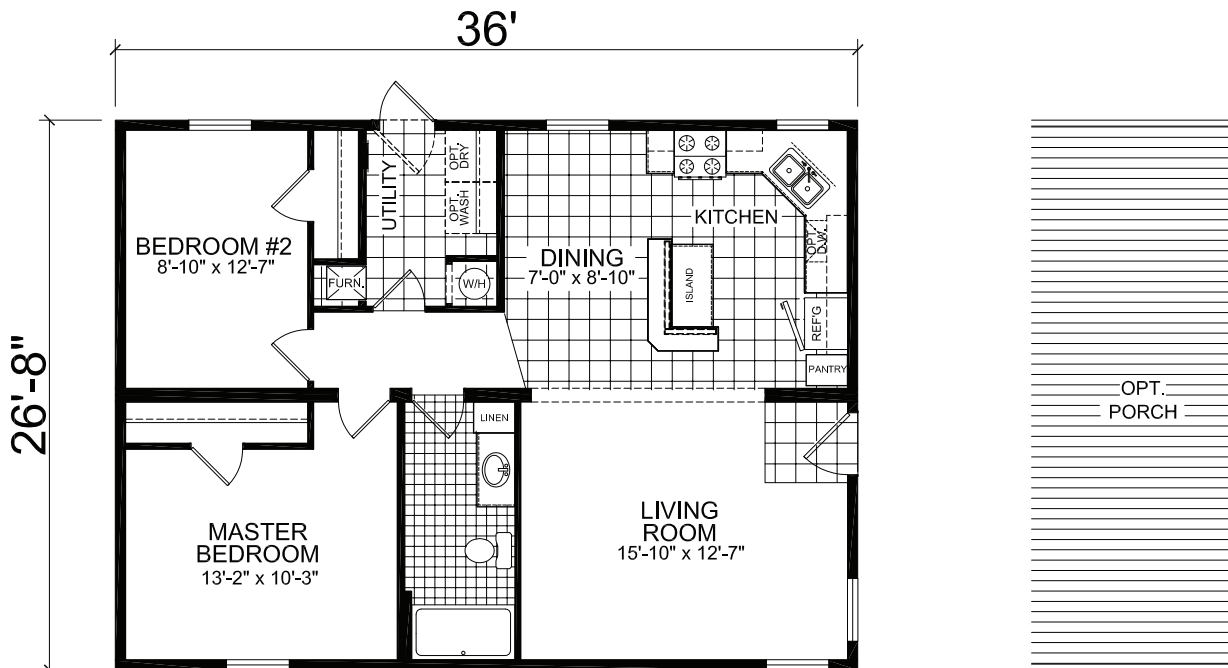
24' X 46' | 2 Bedroom, 2 Bath | 980 sq.ft. **MODEL 140**



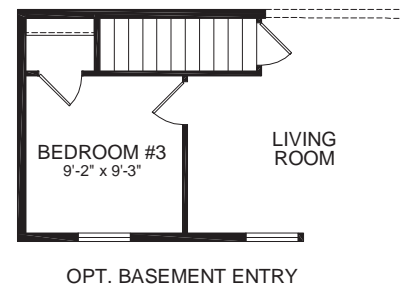
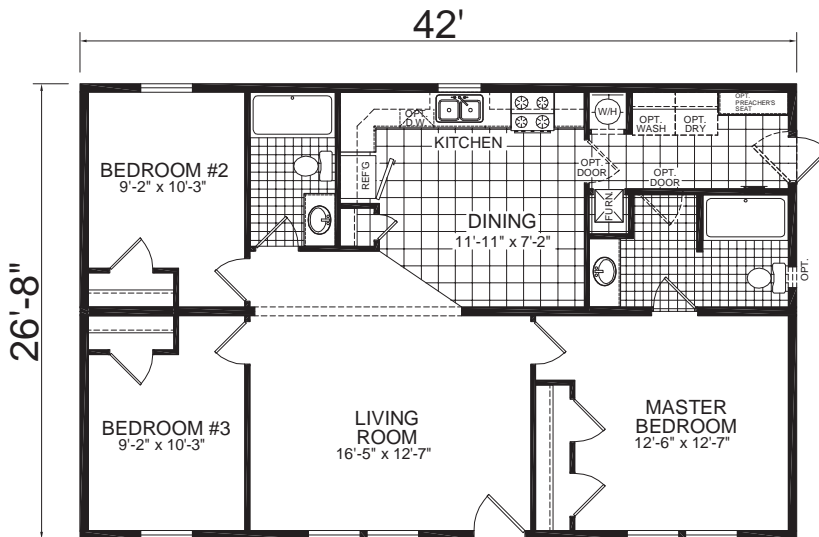
24' X 48' | 3 Bedroom, 2 Bath | 1027 sq.ft. **MODEL 875**



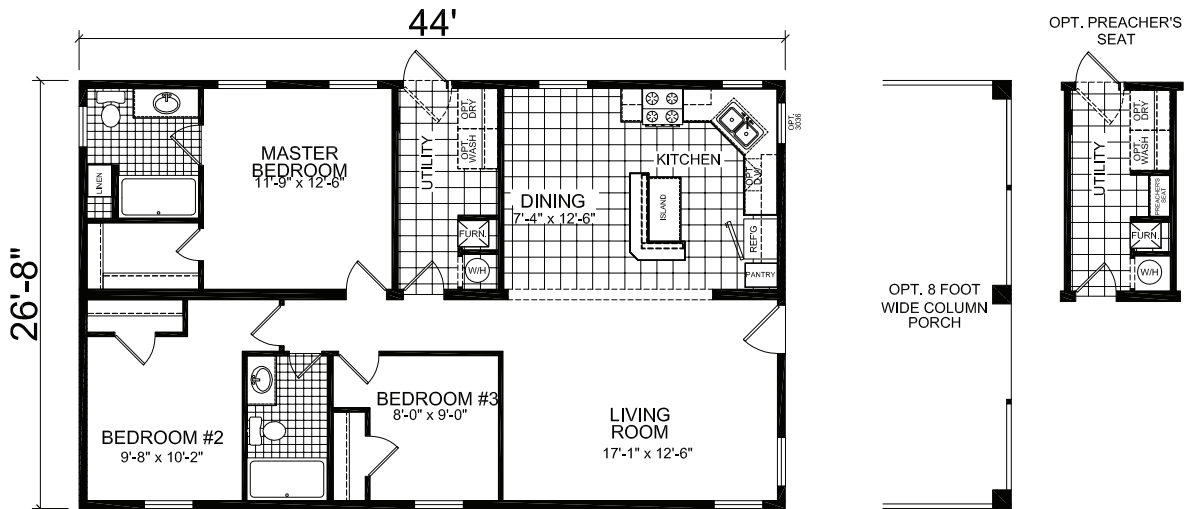
MODEL 130 | 960 sq.ft. | 2 Bedroom, 1 Bath | 28' X 40'



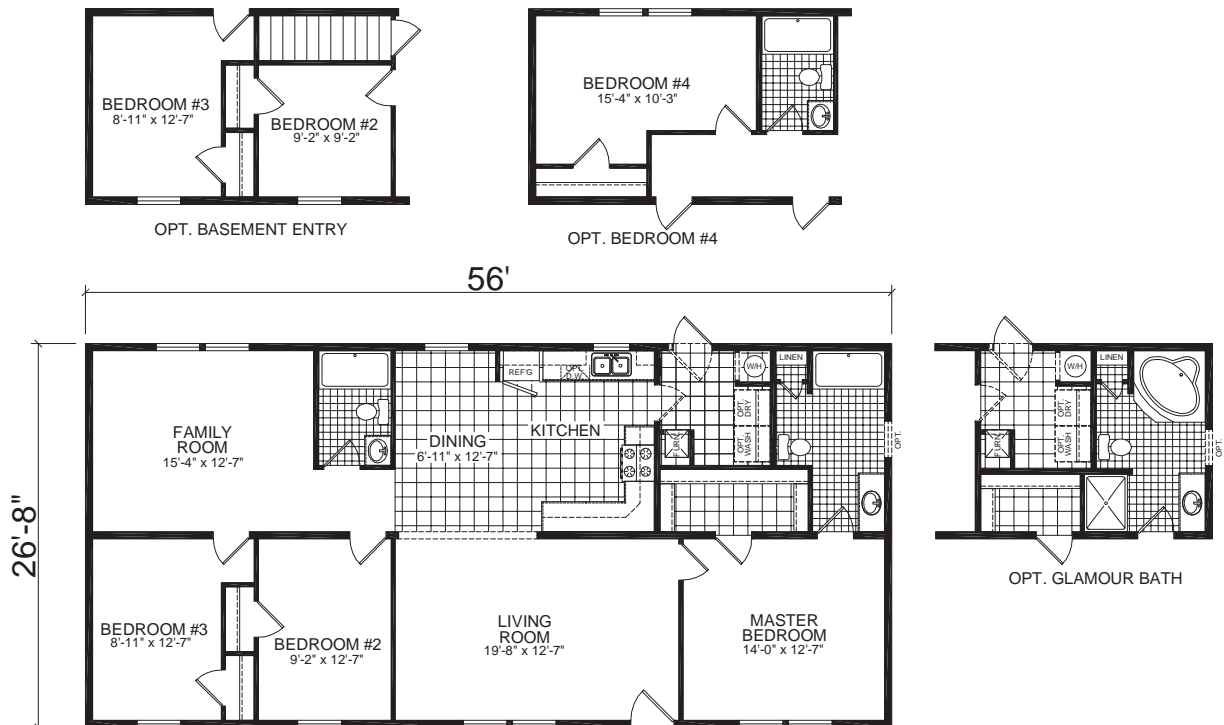
28 X 46' | 3 Bedroom, 2 Bath | 1120 sq.ft. **MODEL 872**



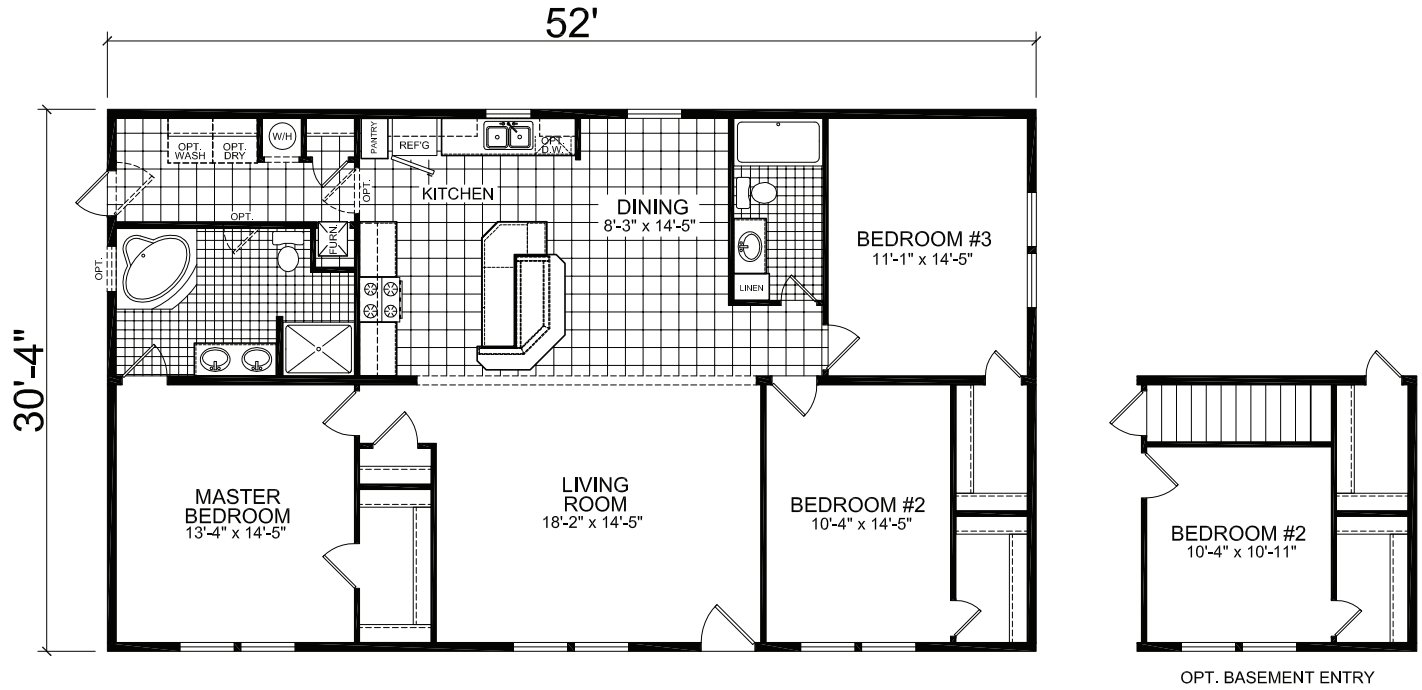
28' X 48' | 3 Bedroom, 2 Bath | 1177 sq.ft. **MODEL 235**



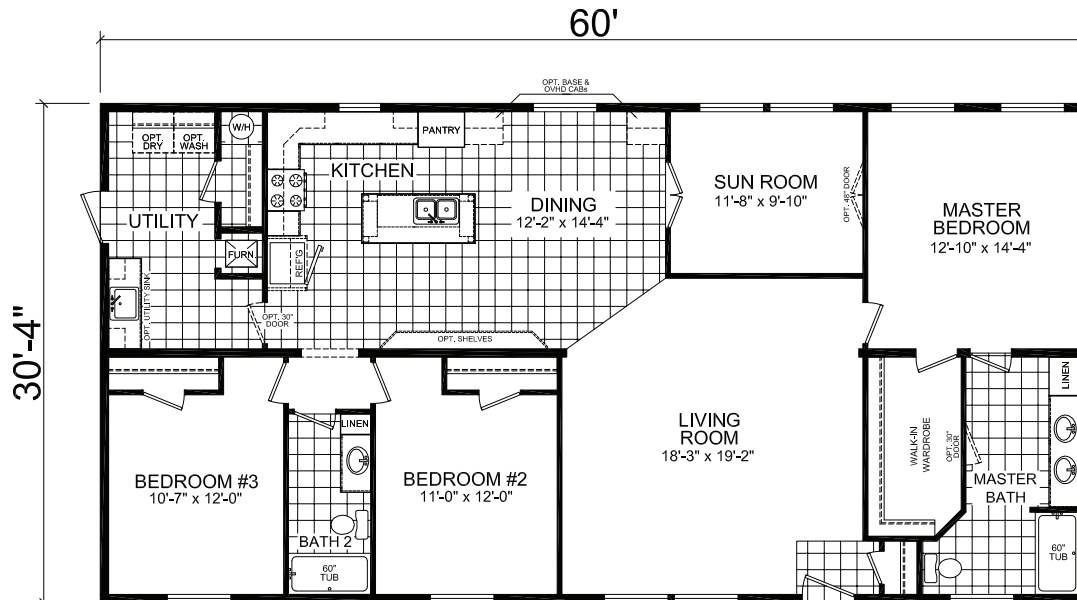
28' X 60' | 3 Bedroom, 2 Bath | 1494 sq.ft. **MODEL 878**



32' X 56' | 3 Bedroom, 2 Bath | 1577 sq.ft. **MODEL 056**



32' X 64' | 3 Bedroom, 2 Bath | 1820 sq.ft. **MODEL 127**



STANDARD FEATURES

EXTERIOR CONSTRUCTION

- Roof Trusses - 20 lb. 24" OC
- Vinyl Dutchlap Siding
- Shingled Roof - 3-Tab 25-Year Shingles with Metal Ridge Vent
- Georgia-Pacific® Structure Backer
- Metal Soffit and Fascia, Drip Edge
- 6" Gable End Overhangs
- Floor Joists 2" x 6" - 16" OC
- 7'-6" Sidewalls Sectional, 8' Sidewalls - Single
- 2" X 6" Sidewalls 16" OC with R-19 Insulation
- R-22 Roof Insulation
- R-13 Floor Insulation
- Recessed Frame (Sectional) and Removable Hitch
- Double 2 1/2" x 4" Marriage Wall -Sectional
- Vaulted Ceilings Throughout - Sectional
- Flat Ceilings Throughout - Single
- All HUD Fees and Seals
- Marriage Line Gasket - Sectional
- House Wrap

EXTERIOR

- Raised Panel Vinyl Shutters Front Door Side - Sectional
- Raised Panel Vinyl Shutters Front Door Side and Hitch-End - Single
- 36" House Type Front Door
- 32" Cottage Rear Door
- Low-E Vinyl Dual Glazed Single Hung Windows with Grids

INTERIOR

- Vinyl Wall Gypsum Throughout
- 1-3/4" Flat Window & Door Casing
- Flat Ceiling Cove with No Base Molding
- 5/16" Window and Door Jam with No Reveal
- 1/2" Finished Drywall "Stomped" Ceiling
- 14 oz. "Live Wire" Carpet with Tackstrip Installation
- 6 lb. Rebond Carpet Pad
- Vinyl Floor in Kitchen, Utility, Bathrooms
- Choice of 4 Decors
- Valances All Windows
- White Embossed Interior Doors
- Wire Shelving in Closets & Pantries
- Walk-in Closets are Finished

LIGHTING

- Exterior Light at Front and Rear Exterior Door
- Single Bulb Ceiling Interior Lights in Kitchen and Hall
- Tulip Light Fixture(s) at Bathroom Vanity(s)
- 100 Amp Service
- Switched Receptacles in Living Room
- Globe Ceiling Lights in Bedrooms

BATHROOMS

- 3 Piece 60" Bathtub(s)
- Shower Curtain with Rod on All 60" Bathtubs
- Beveled Mirror(s) in All Bathrooms
- Dual Knob Faucets - Bathroom Sinks, Bathtubs & Showers
- 36" Vanity Height Throughout
- Power Lighted Vent for Bathrooms

KITCHEN

- 18 CF 2-Door Frost Free Refrigerator
- 30" Gas Range with Pilot Light
- Dual Knob Faucet at Sink
- Deep-well Stainless Steel Sink
- Self-edge Laminate Countertop

CABINETRY

- Wood Frame Beaded Kitchen and Bathroom Cabinet Doors
- Rope Molding on Overhead Kitchen Cabinetry
- Staggered Overhead Cabinets in Kitchen
- Wrapped MDF Stiles at All Kitchen and Bathroom Cabinets
- Round Brushed Nickel Cabinet Pulls
- Adjustable Hidden Cabinet Door Hinges
- 1/2 Center Shelves at Base Cabinets
- Side Mount Roller Guides
- Vented Wire Shelf at Washer/Dryer Area
- Storage Box Over Refrigerator

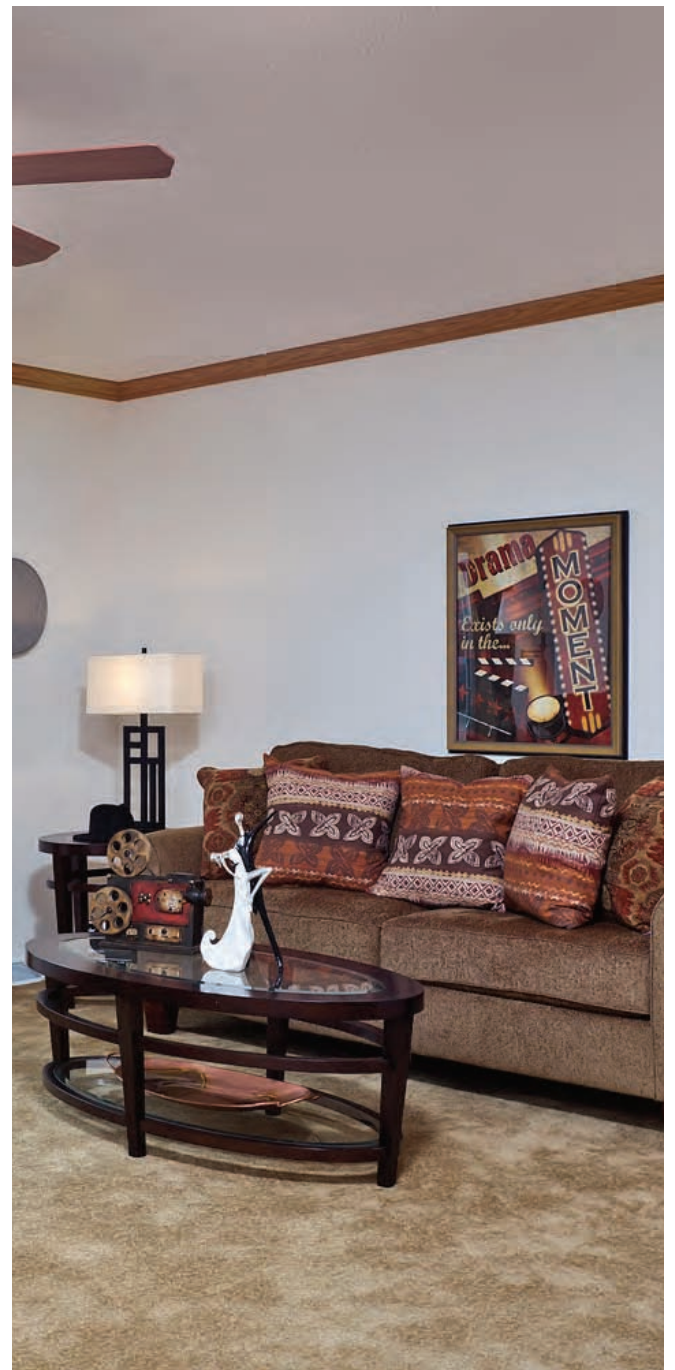
UTILITIES

- Shut-off Valves on All Sinks and Toilets
- 30 Gallon Electric Water Heater with Pan
- Smoke Detectors Per Code
- Gas Furnace Sized to Home
- Plumb Wire and Vent for Washer and Dryer



CHAMPION HAS A HOME FOR EVERYONE.

Note: Champion Homes reserves the right to make changes at any time in prices, colors, materials, equipment, specifications and models and also to discontinue models without notice and/or obligation. All dimensions are nominal. Data shown is basic information for the prospective buyer effective at time of issuance of this material. Retailer will provide complete up-to-date information on available equipment, specifications, etc. not shown or noted here. Items referred to as being available or optional are at extra costs.



QUALITY YOU EXPECT.

Champion Home Builders, Claysburg, PA, is located in South Central Pennsylvania and has been producing affordable, innovative manufactured housing for the Northeastern United States market since 1964. Our outstanding network of retailers extends as far north as Maine, and as far south as Virginia.



CHAMPION 
Claysburg, Pennsylvania

2551 Champion Drive
Claysburg, PA 16625

www.chbclaysburg.com