

CHAMPION

Claysburg, Pennsylvania



*Built Better
From the Inside Out*



SINGLE-SECTION HOMES



MAKE YOURSELF AT HOME WITH CHAMPION.

Every manufactured and modular home Champion builds is professionally designed and engineered. Built by craftsmen in a controlled factory environment, our homes are constructed to meet the appropriate national, state or local building code. In addition, we continually inspect our work at every phase of the home construction process to ensure our rigorous quality standards are met. We believe that to build the best, you have to use the best. So we use quality building materials in every home we build.

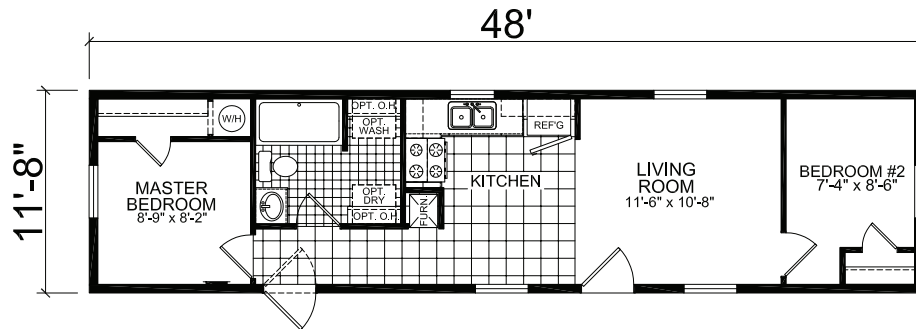


BUILT BETTER FROM THE INSIDE OUT.

We have a home for everyone, no matter what stage of life you're in. Whether you're a first-time homebuyer, a growing family needing a larger home, or an empty nester wanting to downsize, we have a factory-built design to fit your lifestyle. From active young families on the go to retirees ready to relax and enjoy, our vast selection of floor plans, home décors and options give you the design choices you want to create your dream home.

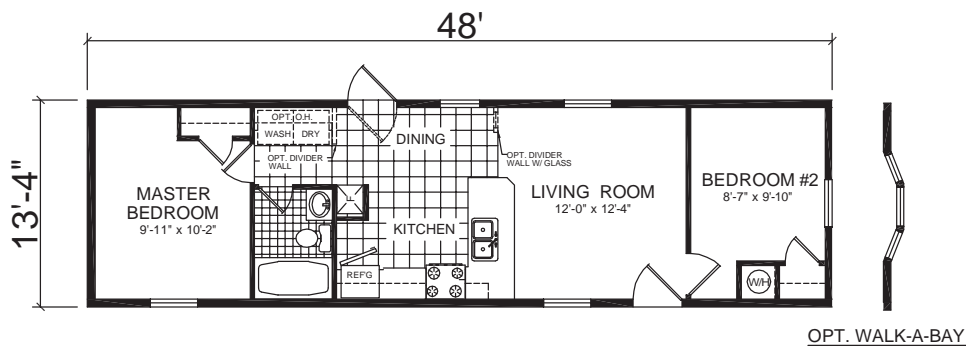


MODEL 038* 560 sq.ft. | 2 Bedroom, 1 Bath | 12' X 52'



* also available at nominal 14' width

MODEL 807* 640 sq.ft. | 2 Bedroom, 1 Bath | 14' X 52'



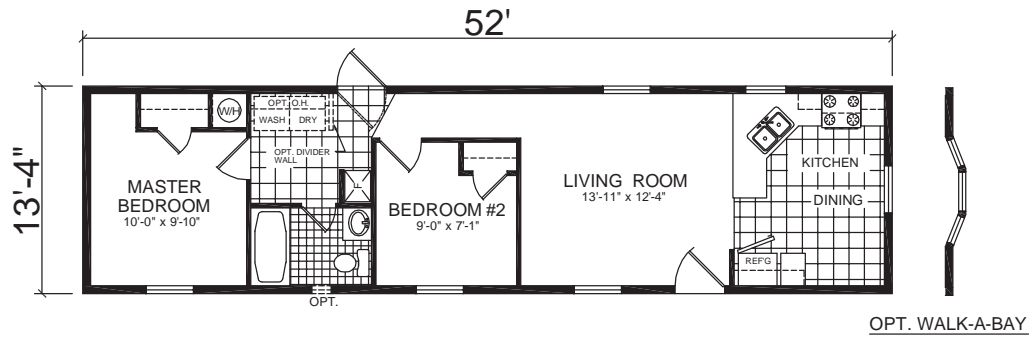
OPT. WALK-A-BAY

* also available at nominal 16' width



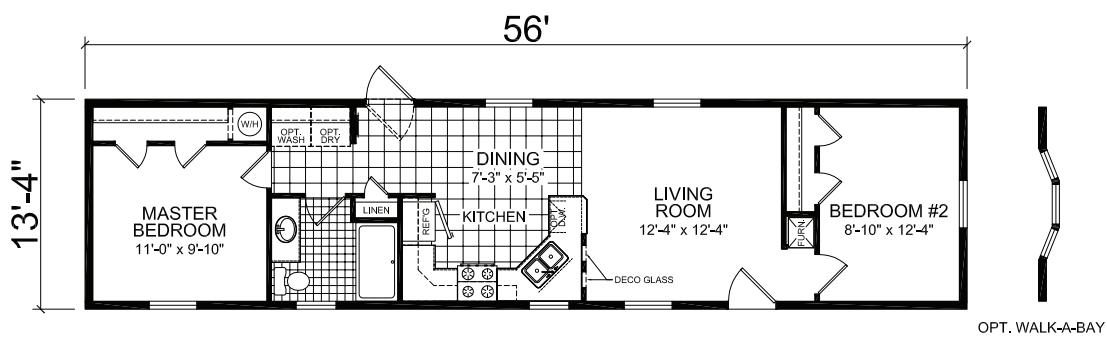
OPT. HALF BATH

14' X 56' | 2 Bedroom, 1 Bath | 693 sq.ft. **MODEL 800***



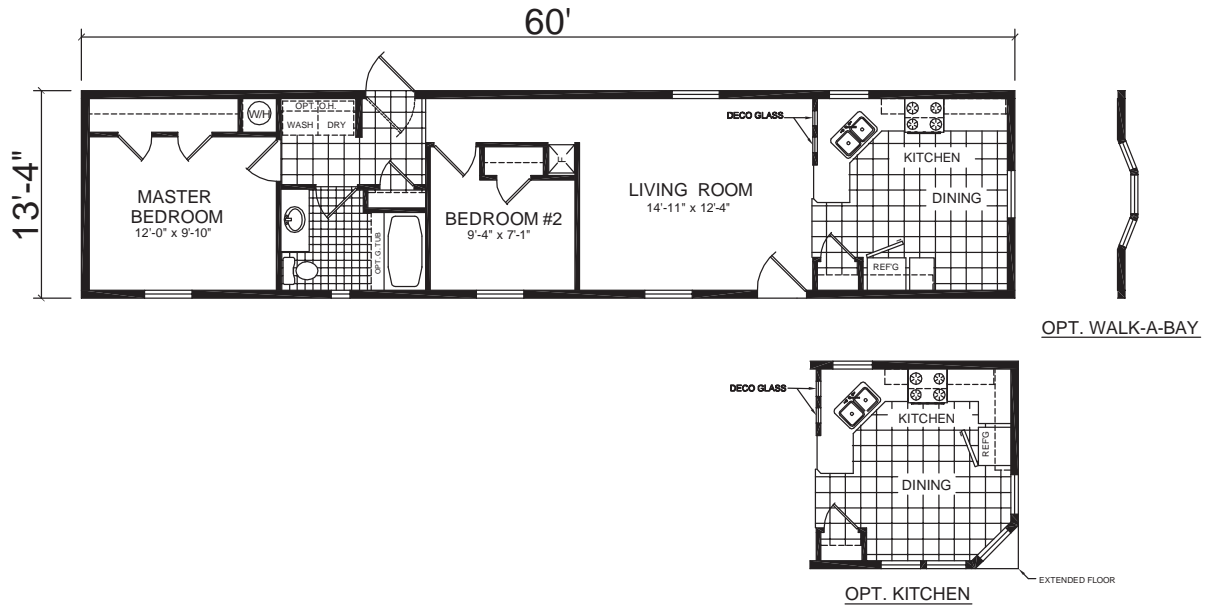
* also available at nominal 16' width

14' X 60' | 2 Bedroom, 1 Bath | 747 sq.ft. **MODEL 100***



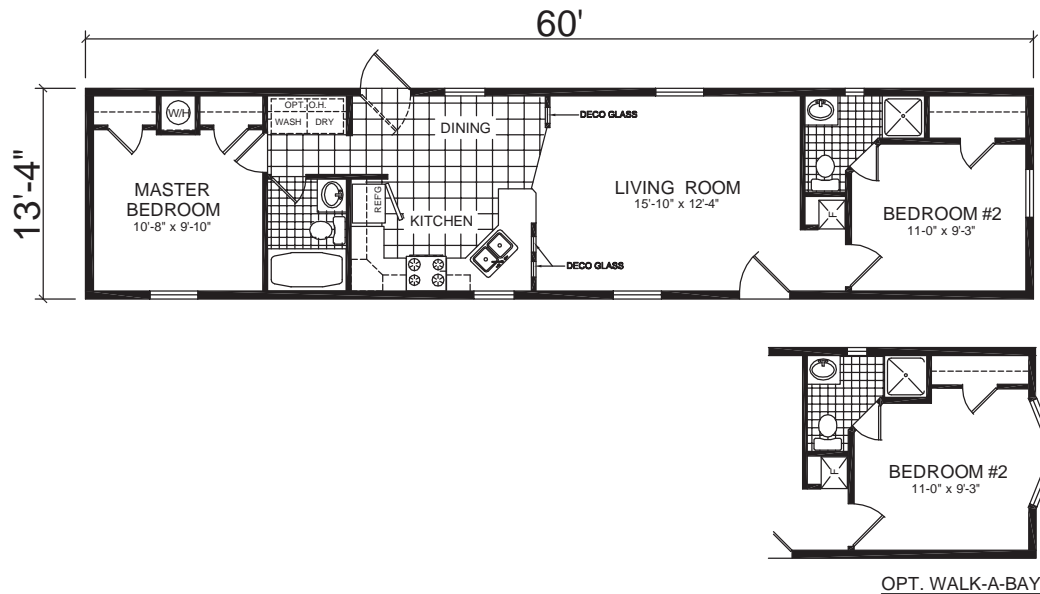
* also available at nominal 16' width

MODEL 013* 800 sq.ft. | 2 Bedroom, 1 Bath | 14' X 64'



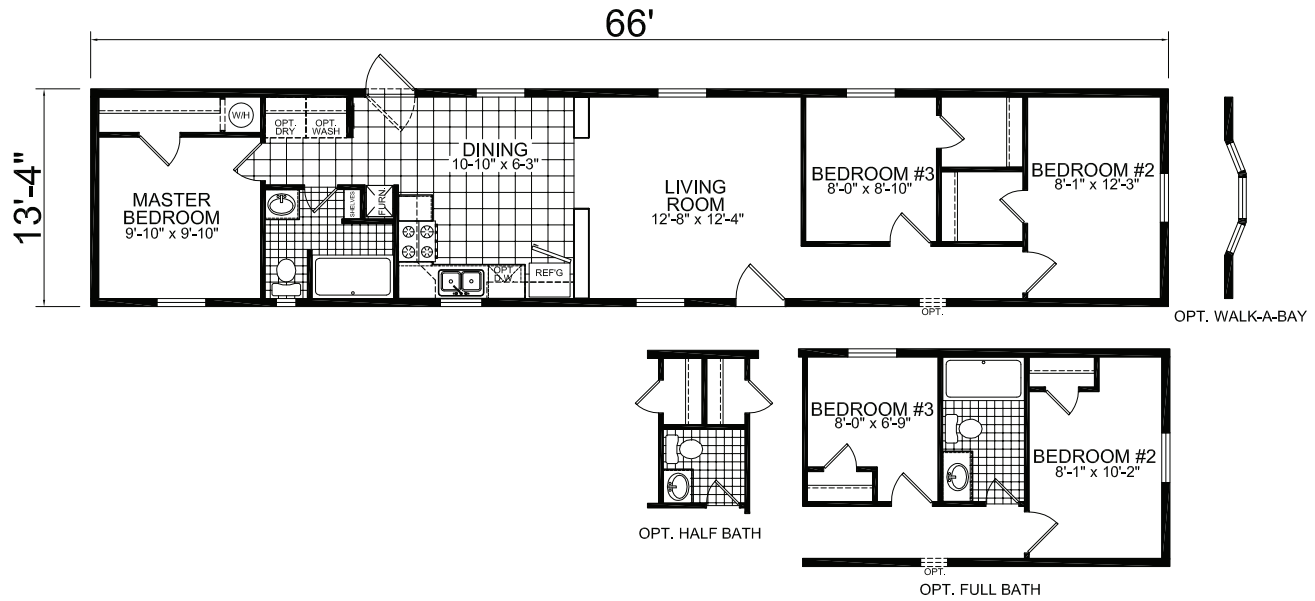
* also available at nominal 16' width

MODEL 005* 800 sq.ft. | 2 Bedroom, 1.75 Bath | 14' X 64'



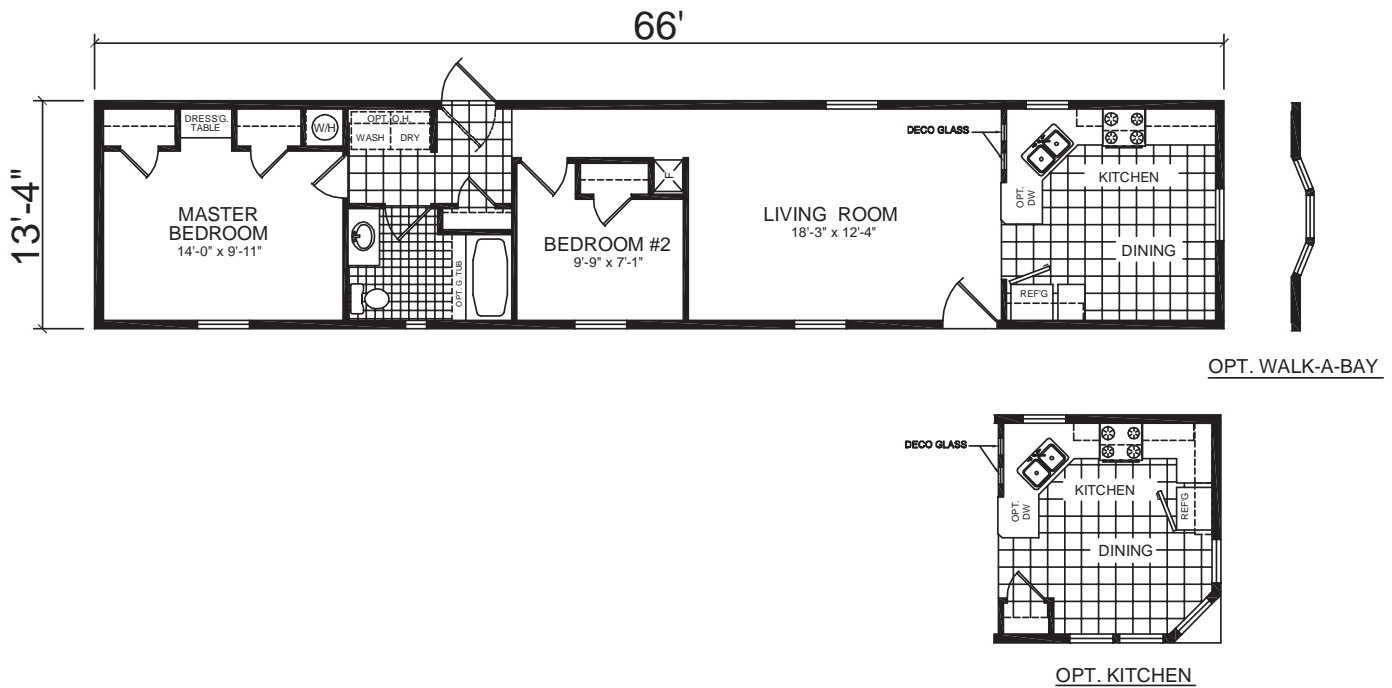
* also available at nominal 16' width

14' X 70' | 3 Bedroom, 1 Bath | 880 sq.ft. **MODEL 846***



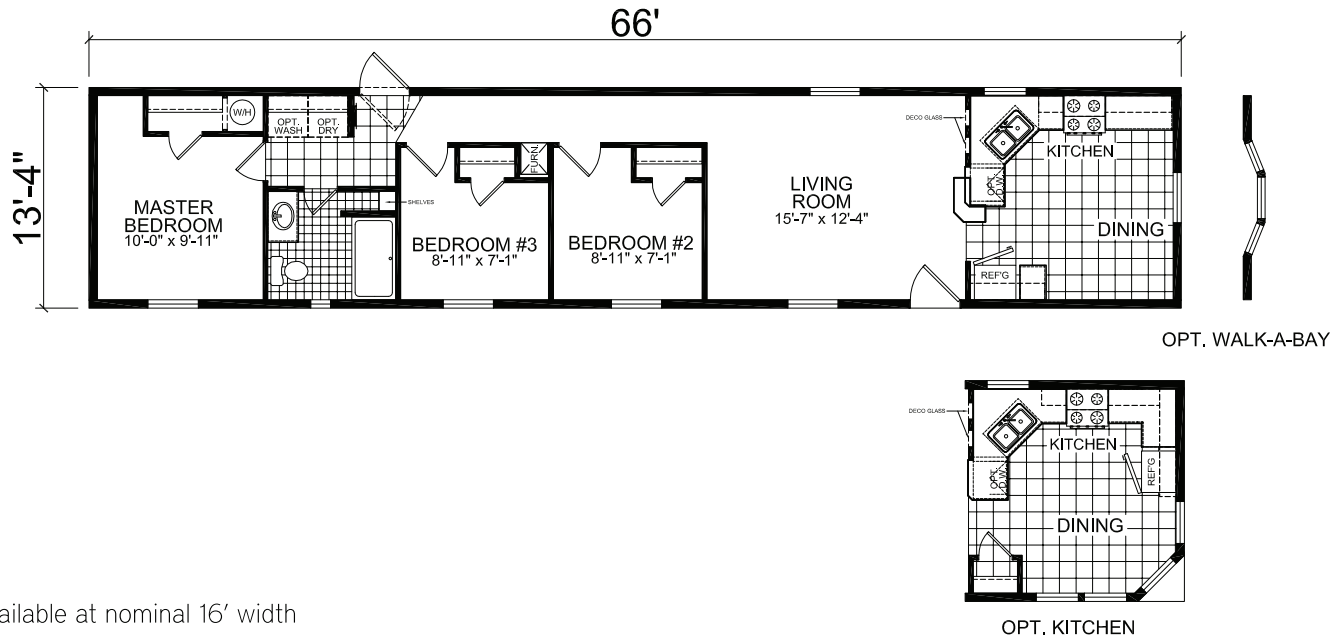
* also available at nominal 16' width

14' X 70' | 2 Bedroom, 1 Bath | 880 sq.ft. **MODEL 889***



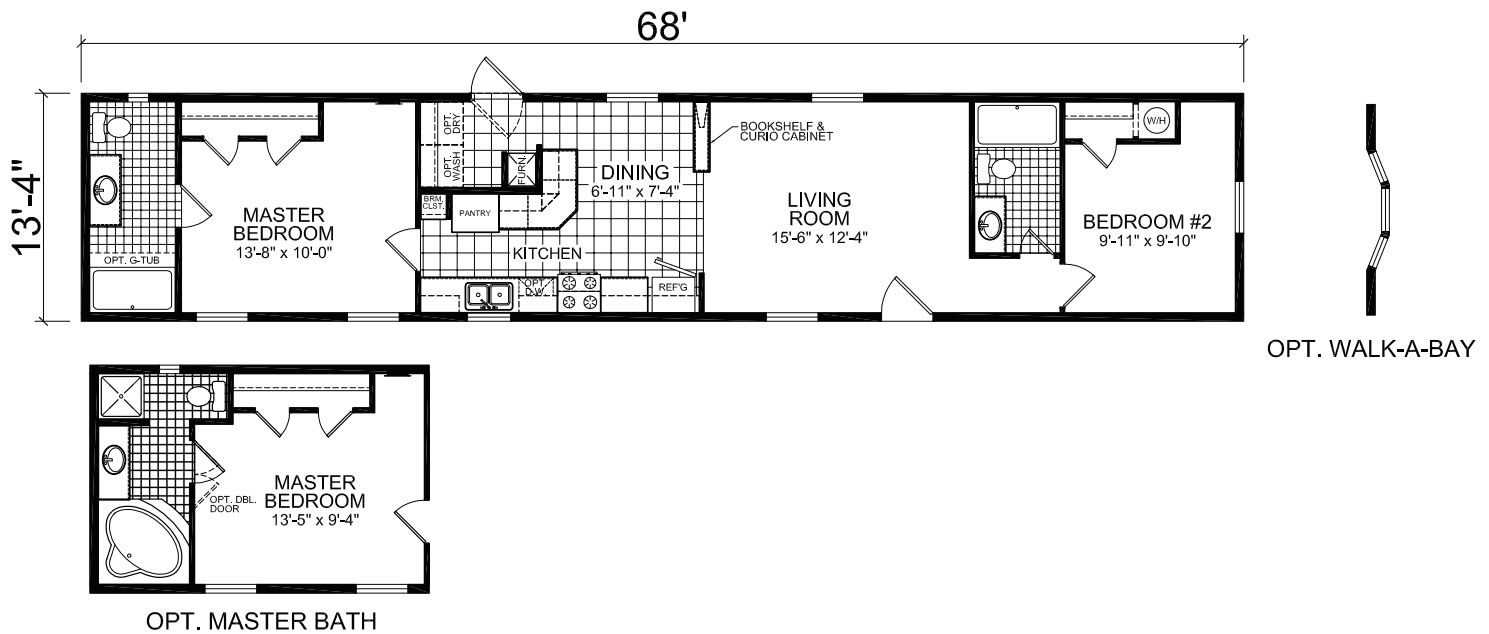
* also available at nominal 16' width

MODEL 890* 880 sq.ft. | 3 Bedroom, 1 Bath | 14' X 70'



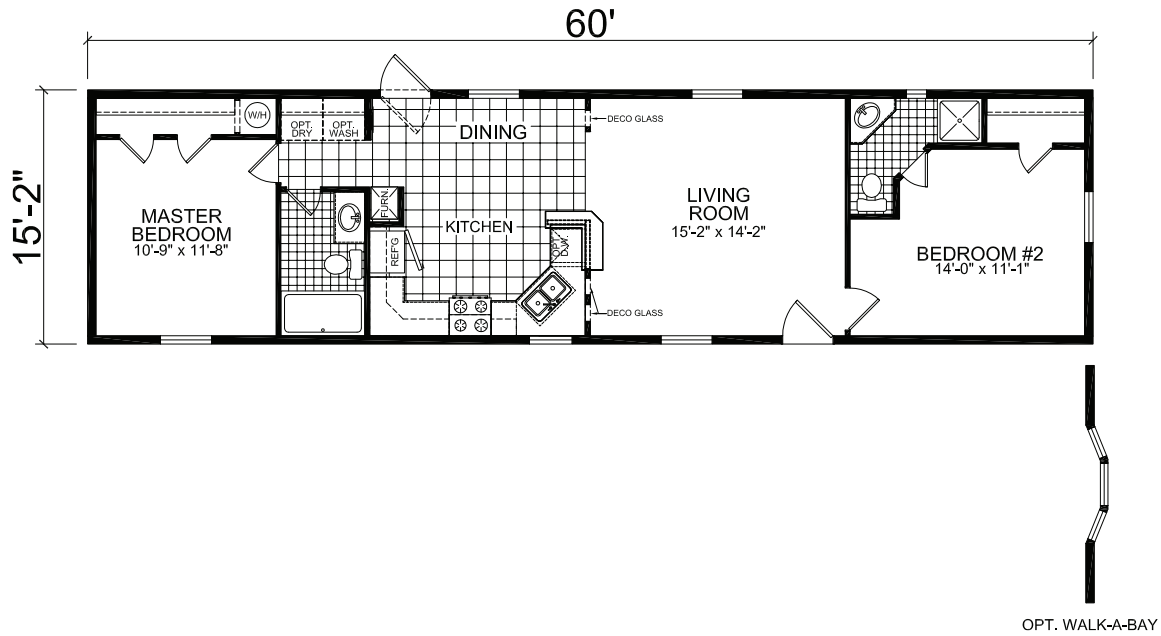
* also available at nominal 16' width

MODEL 390* 907 sq.ft. | 2 Bedroom, 2 Bath | 14' X 72'

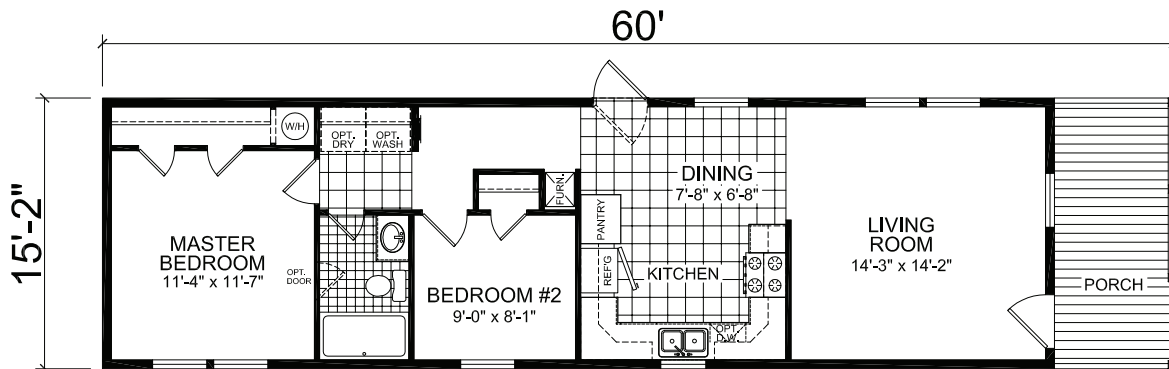


* also available at nominal 16' width

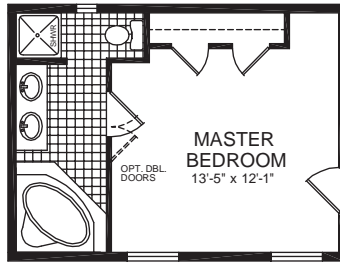
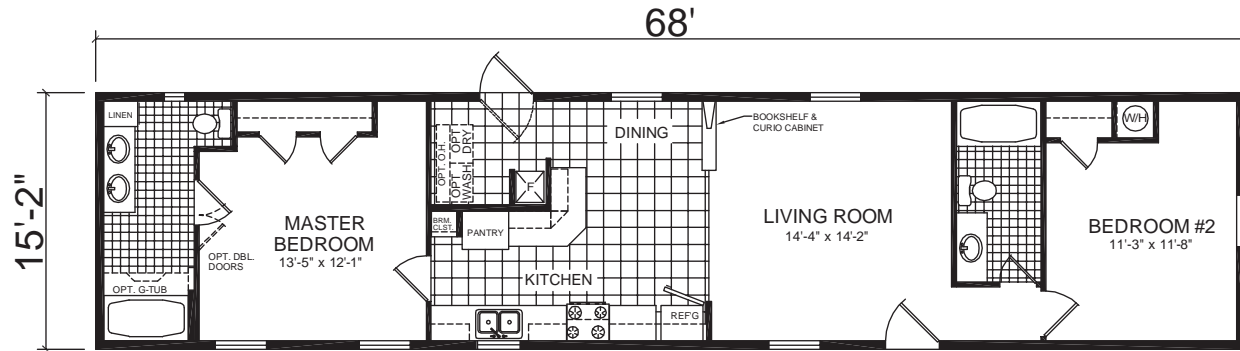
16' X 64' | 2 Bedroom, 1.75 Bath | 910 sq.ft. **MODEL 546**



16' X 64' | 2 Bedroom, 1 Bath | 910 sq.ft. **MODEL 913**



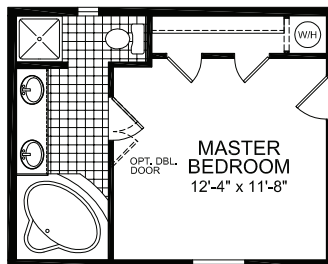
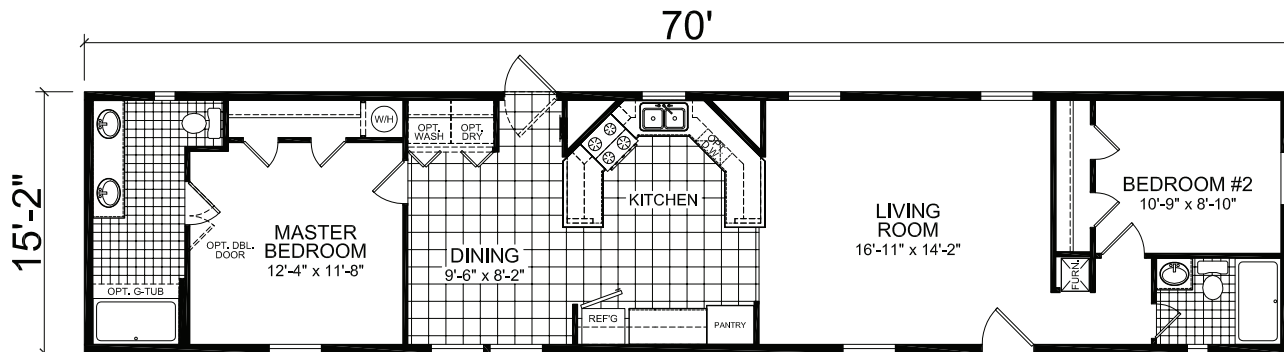
MODEL 548 1031 sq.ft. | 2 Bedroom, 2 Bath | 16' X 72'



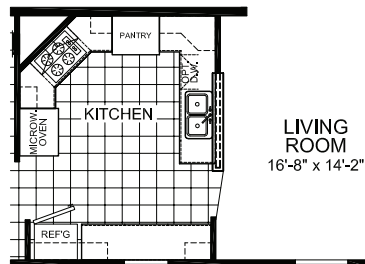
OPT. M. BATH

OPT. WALK-A-BAY

MODEL 810 1062 sq.ft. | 2 Bedroom, 2 Bath | 16' X 74'

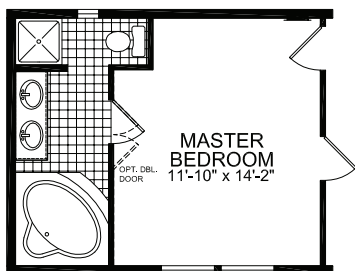
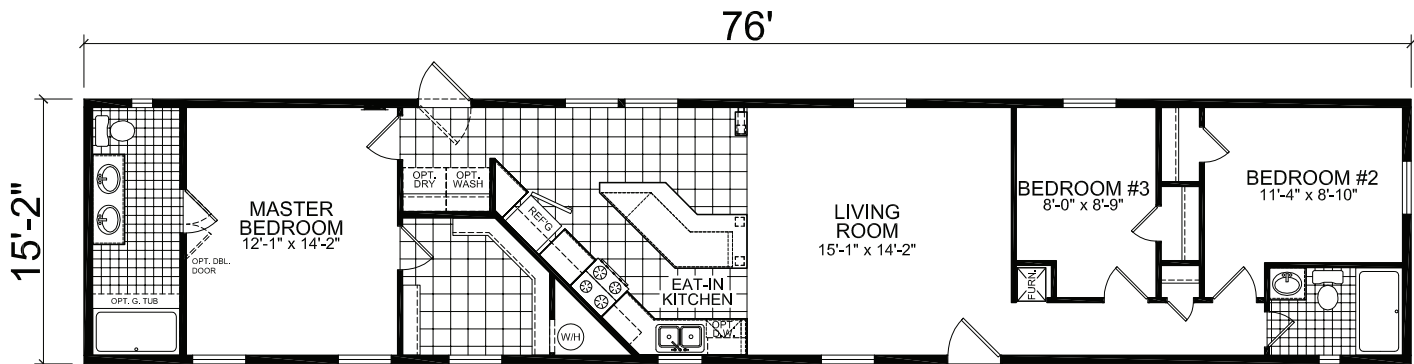


OPT. MASTER BATH

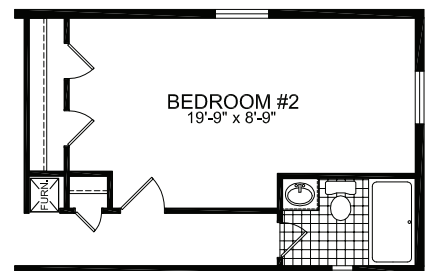


OPT. ULTIMATE KITCHEN

16' X 80' | 3 Bedroom, 2 Bath | 1153 sq.ft. **MODEL 625**



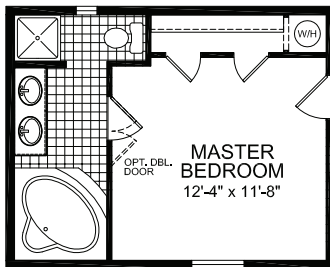
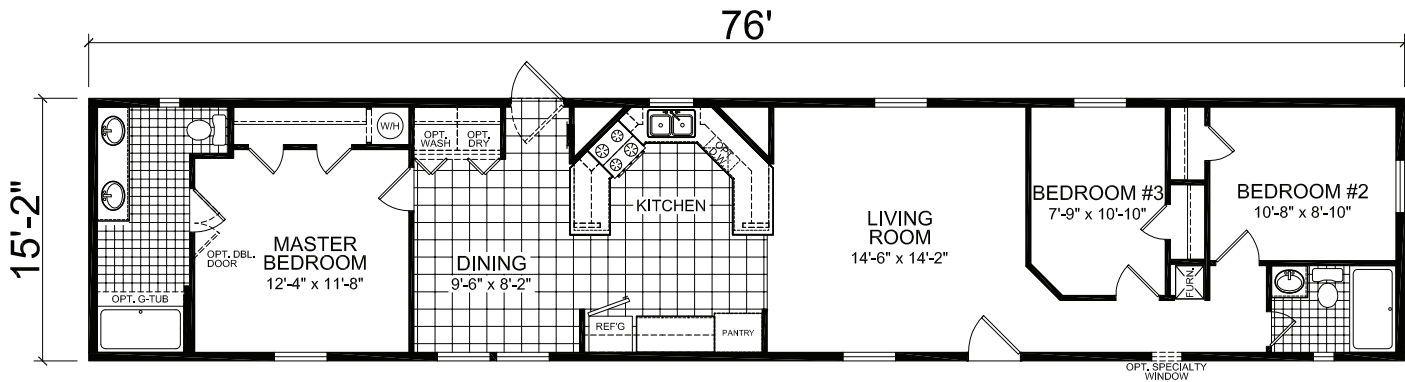
OPT. M. BATH



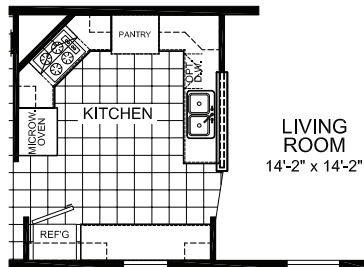
OPT. BEDROOM #2

MODEL 809

1153 sq.ft. | 3 Bedroom, 2 Bath | 16' X 80'



OPT. MASTER BATH



OPT. ULTIMATE KITCHEN

STANDARD FEATURES

EXTERIOR CONSTRUCTION	EXPLORER
Standard Frame Removable Hitch	Std
Vinyl Dutchlap Siding	Std
Blackboard Sheathing	Std
8' 0" Sidewalls with Flat Ceiling Throughout	Std
20# Roof Load - 24" O.C. Trusses	Std
Vinyl Raised Panel Shutters Front Door Sidewall & Hitch End	Std
6" Gable End Overhangs	Std
Low E Vinyl Dual Glazed Windows	Std
Single Hung Windows with Grids	Std
Roof Insulation	R-30
Floor Insulation	R-13
Exterior Wall Insulation	R-19
2x6 Exterior Walls 16" O.C.	Std
2x3 Interior Walls 24" O.C.	Std
2x6 Floor Joists 16" O.C.	Std
1/2" Ceiling Drywall	Std
Stomped Ceiling Texture Application	Std
Vinyl on Gypsum Wallboards	Std
1/2" Primed Drywall	Option
36/80 Front Door	House Type Door with Storm
36/80 Rear Door	Cottage Door
Light at Exterior Front Door	White Coach Light
Light at Exterior Rear Door	White Coach Light
Shingled Roof with Ridge Vent	3-Tab 25-Year Shingles
Roof Decking	7/16" OSB
House Wrap	Forced Option

INTERIOR FINISHES	EXPLORER
Deluxe Chandelier Dining Room	Option
Décor	Choice of 4 Décors
Congoleum® Vinyl Flooring	Kitchen, Utility, Both Baths
Shaw® Carpet with Tack Strip	14 Ounce Std
6 lb. 1/2" Rebond Carpet Pad	Std
Foyer	Vinyl
Interior Doors	White Embossed
Brushed Nickel Door Knobs	Std
Mini Blinds & Window Coverings	Std with Valances Only
Residential Cove Molding	Kitchen, Living Room & Hall
Wainscot with Chair Rail Molding - 5 Colors to Choose From	Living Room
Window & Door Casing	2" Profile
Window & Door Jams	3/8" with No Reveal
Wire Vented Shelves All Closets	Std
Wire Vented Washer/Dryer Shelf	Std
Finished Closets	Std
Level II Drapery Package with Mini Blinds	Std

STANDARD FEATURES

ELECTRICAL, HEATING & PLUMBING	EXPLORER
Pex Water Lines	Std
Miller AG017 [®] Gas Furnace	Std
Metal Louvered Furnace Door (Where Applicable)	Std
Dual Control Thermostat	Std
Water Heater with Pan	30-Gallon Electric
Ventillaire™ Air Exchange System	Std
Plumb for Washer	Std
Wire for Dryer	Std
Exterior GFI Protected Outlets	One
Exterior Faucet	Option
GFCI Protected Outlets per Code	Std
Switched Lights in All Walk-In Closets	Std
Double Bulb Ceiling Lights	Std
Smoke Detectors per Code	Std
100 Amp Electrical Service	Std
All Copper Wiring	Std
Water Shut-offs Throughout & Main	Std
Perimeter Heat Registers	Std

KITCHEN	EXPLORER
4" Laminate Edge	Std
36" Counter Height	Std
30" Overhead Cabinets	Std
Kitchen Cabinets	Wood Frame Beaded Panel
Cabinet Stiles	MDF Wrapped
Hidden Cabinet Hinges	Std
Brushed Nickel Cabinet Pulls	Round
Lined Overhead Cabinets	Std
Adjustable Shelving in Overheads	Std
Bottom Panel Underneath Cabinet	Std
Drawer Over Door Construction	Option
Side Mount Roller Guides	Std
Stainless Steel Deep-Well Sink	Std
Kitchen Faucet	Dual Knob
30" GE [®] Gas Range with Pilot Light	Std
Range Hood	30" Lighted with Fan
18 Cu. Ft. GE [®] Frost Free Refrigerator	Std
White or Black GE [®] Appliance Package	Option
Refrigerator Overhead Shelf	Storage Box
Cabinet Molding on Overhead Cabinets	Oak Profile
Bottom Cabinet Molding	Option
Tip-Out Trays at Kitchen Sink	Option
Center Shelves Base Cabinets	Std
Ceramic Tile Backsplash with Accent Feature at Range Area	Std



STANDARD FEATURES

BATH	EXPLORER
Full-Size 60" 1-Piece Fiberglass Tub/Shower	Std (per print) with Curtain & Rod
32" 1-Piece Shower with Door per Plan	Std (per print)
Lighted Vent Fans All Baths	Std
36" Bath Vanity Height	Std
Porcelain Commodes with Shutoffs	Std
Porcelain Sinks All Baths	Option
Vanity and Tub/Shower Faucets	Dual Knob
Master Bath Vanity Mirrors	Std with Beveled Edge
Glamour Bath Mirror Treatments	Std
Hall Bath Vanity Mirrors	Std with Polished Edge
Vanity Lighting	Globe Ceiling Light Fixture



QUALITY YOU EXPECT.

Champion Home Builders, Claysburg, PA, is located in South Central Pennsylvania and has been producing affordable, innovative manufactured housing for the Northeastern United States market since 1964. Our outstanding network of retailers extends as far north as Maine, and as far south as Virginia.



CHAMPION 
Claysburg, Pennsylvania

2551 Champion Drive
Claysburg, PA 16625

www.chbclaysburg.com

NOTE: Champion Homes reserves the right to make changes at any time in prices, colors, materials, equipment, specification and models and also to discontinue models without notice and /or obligation. All dimensions are nominal. Data shown is basic information for the prospective buyer effective at time of issuance of this material. Retailer will provide complete up-to-date information on available equipment, specifications, etc. not show or noted here. Items referred to as being available or optional are at extra costs.

07122500