

CHAMPION®

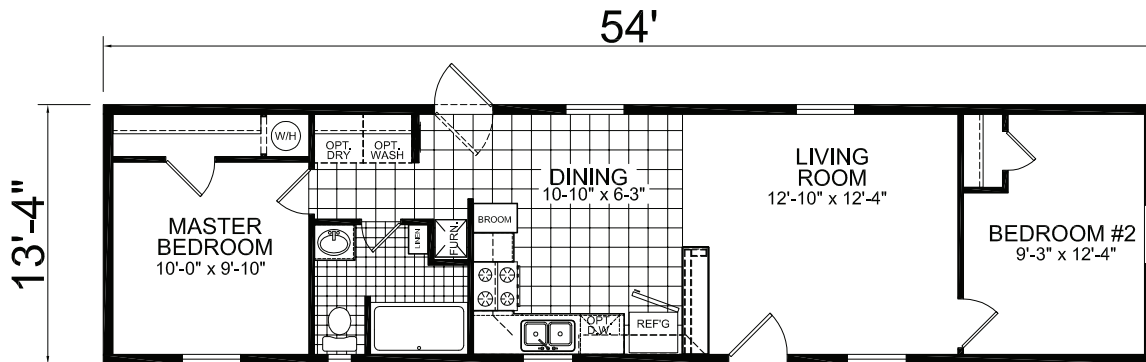
Claysburg, Pennsylvania

*Built Better
From the Inside Out*

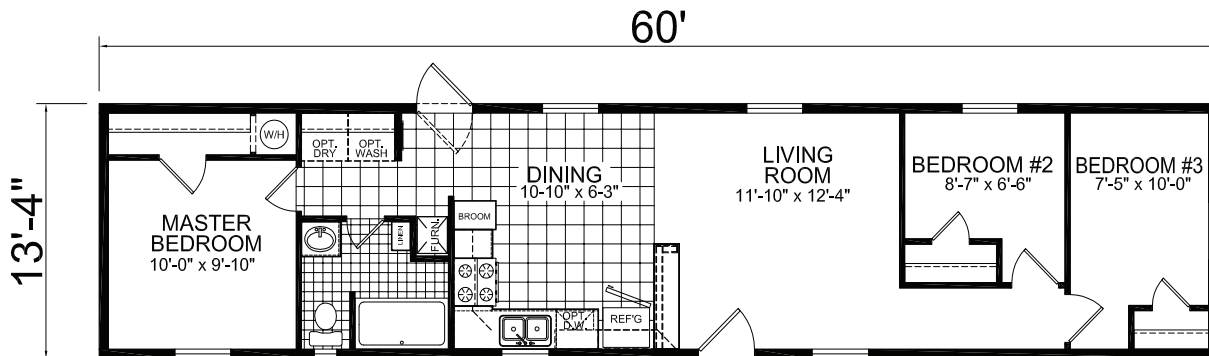


EXTREME VALUE SERIES

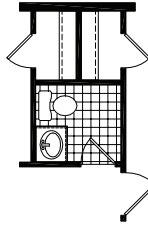
MODEL 246 720 sq.ft. | 2 Bedroom, 1 Bath | 14' X 58'



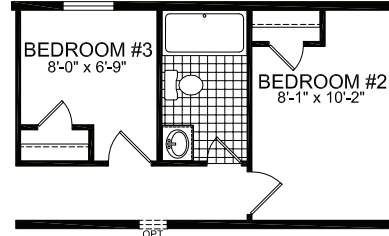
MODEL 261 800 sq.ft. | 3 Bedroom, 1 Bath | 14' X 64'



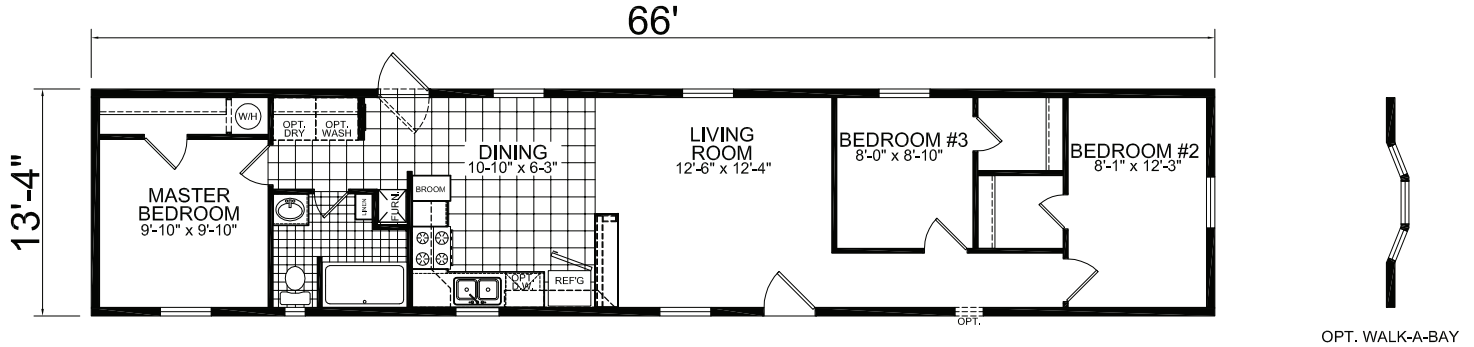
14' X 70' | 3 Bedroom, 1 Bath | 880 sq.ft. **MODEL 247**



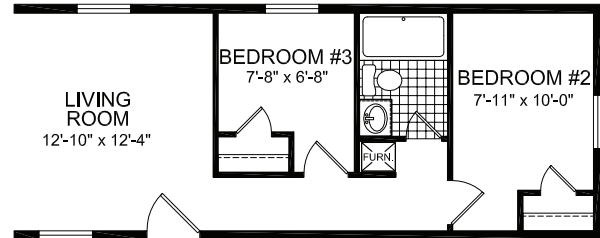
OPT. HALF BATH



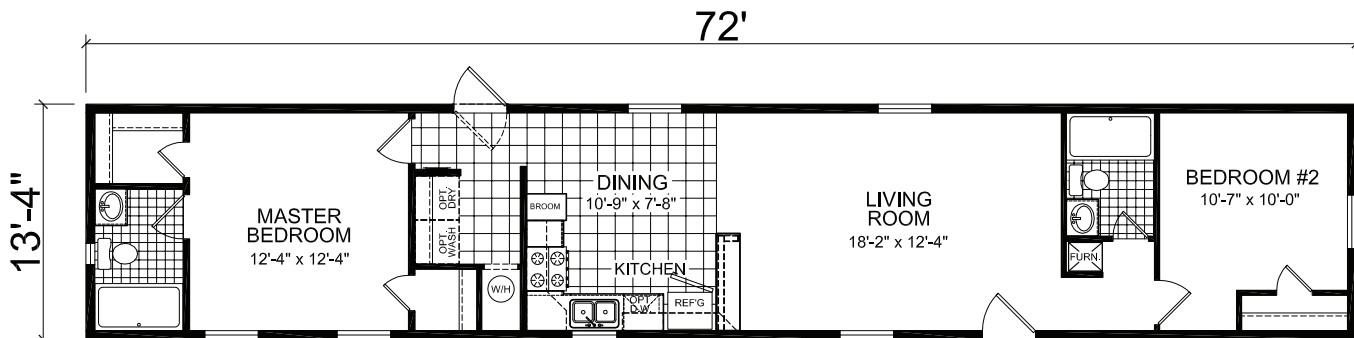
OPT. FULL BATH



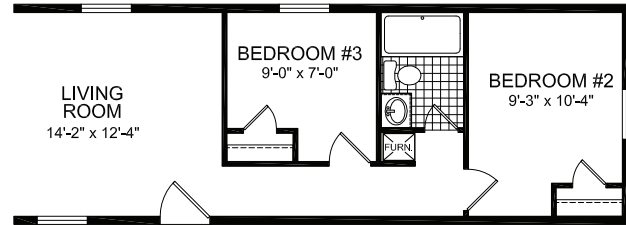
14' X 76' | 2 Bedroom, 2 Bath | 960 sq.ft. **MODEL 248**



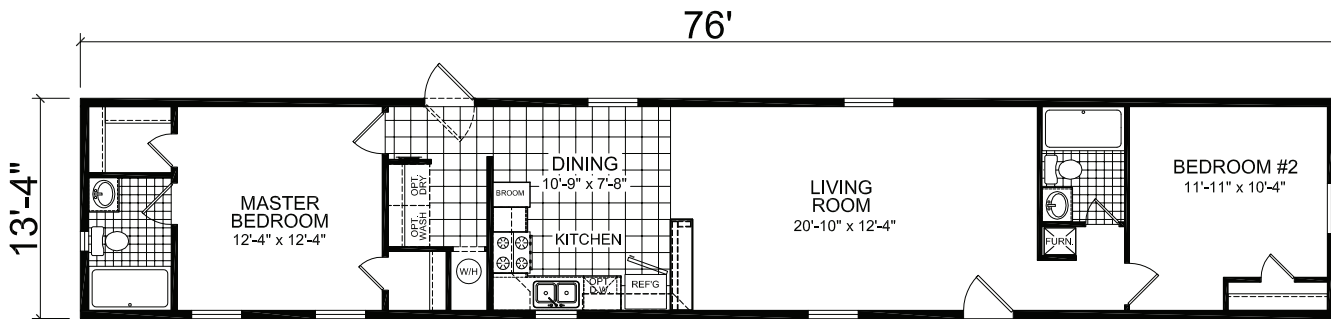
OPT. BEDROOM #3



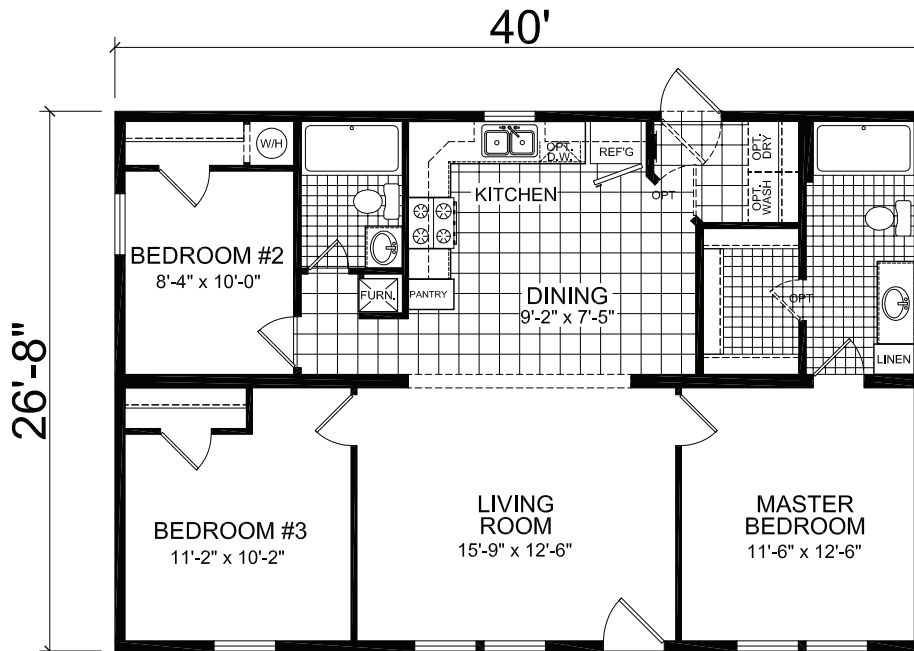
MODEL 249 1013 sq.ft. | 2 Bedroom, 2 Bath | 14' X 80'



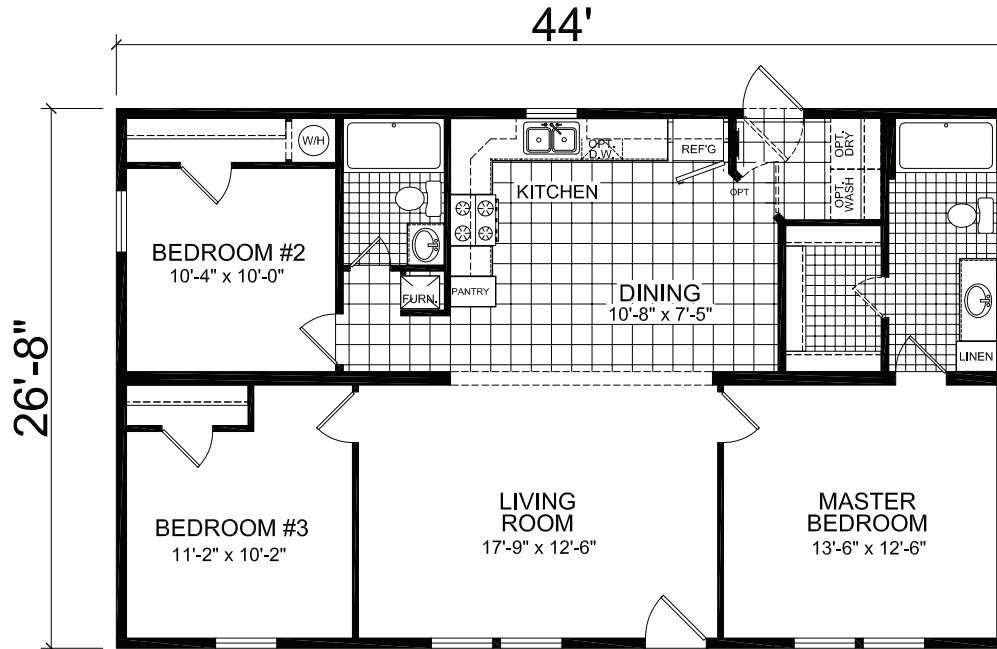
OPT. BEDROOM #3



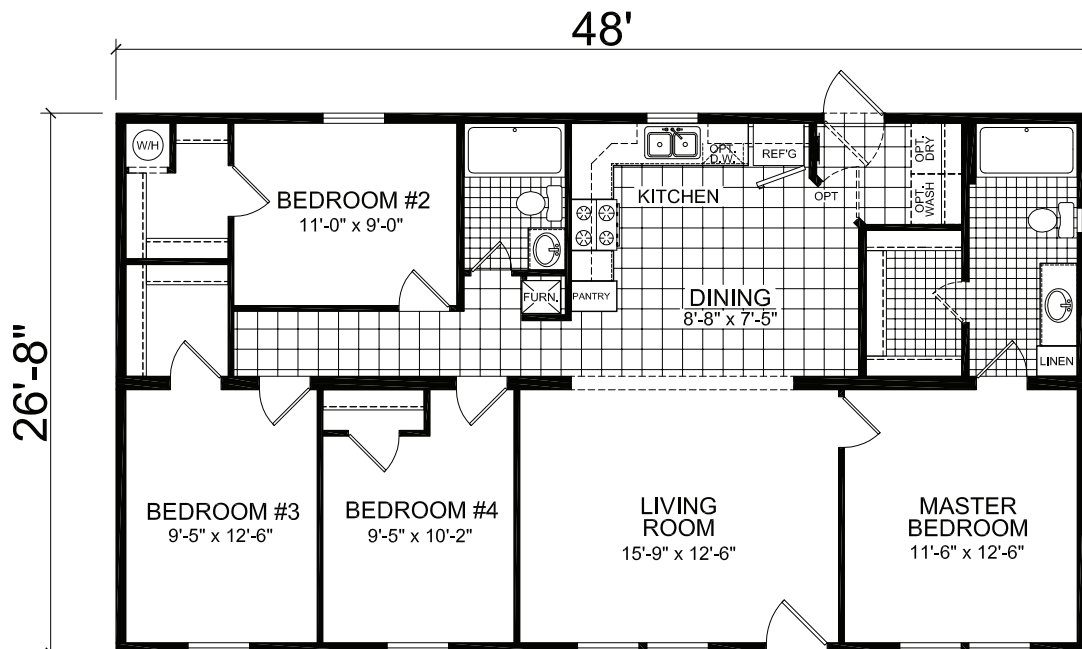
MODEL 241 1067 sq.ft. | 3 Bedroom, 2 Bath | 28' X 44'



28' X 48' | 3 Bedroom, 2 Bath | 1173 sq.ft. **MODEL 242**

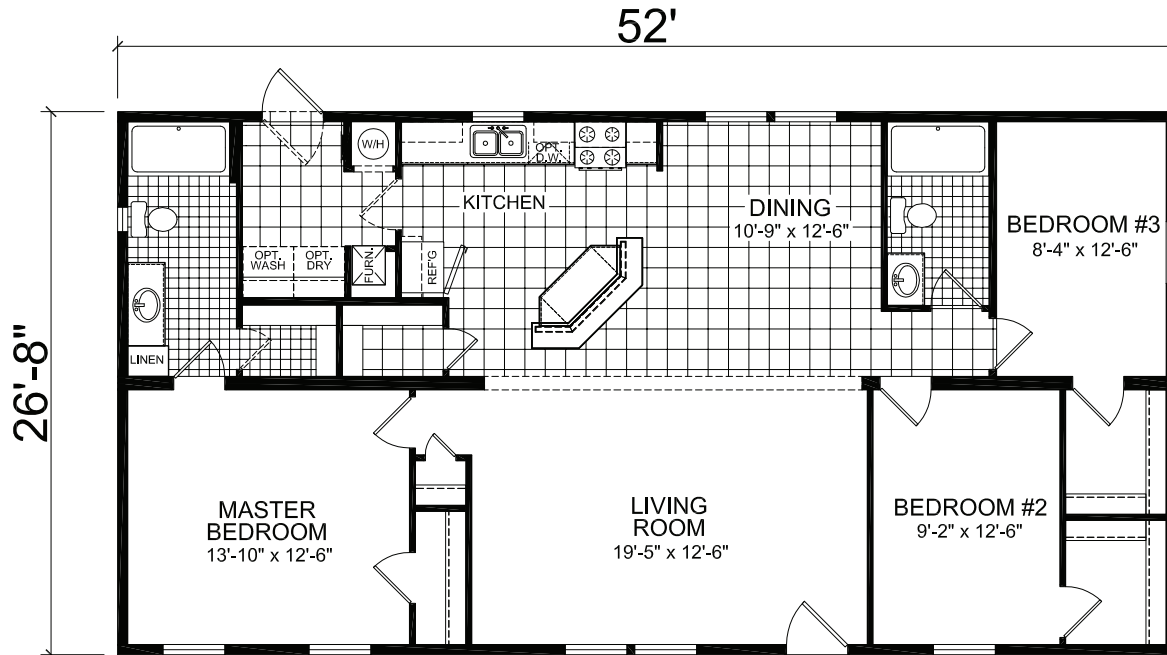


28' X 52' | 4 Bedroom, 2 Bath | 1280 sq.ft. **MODEL 243**



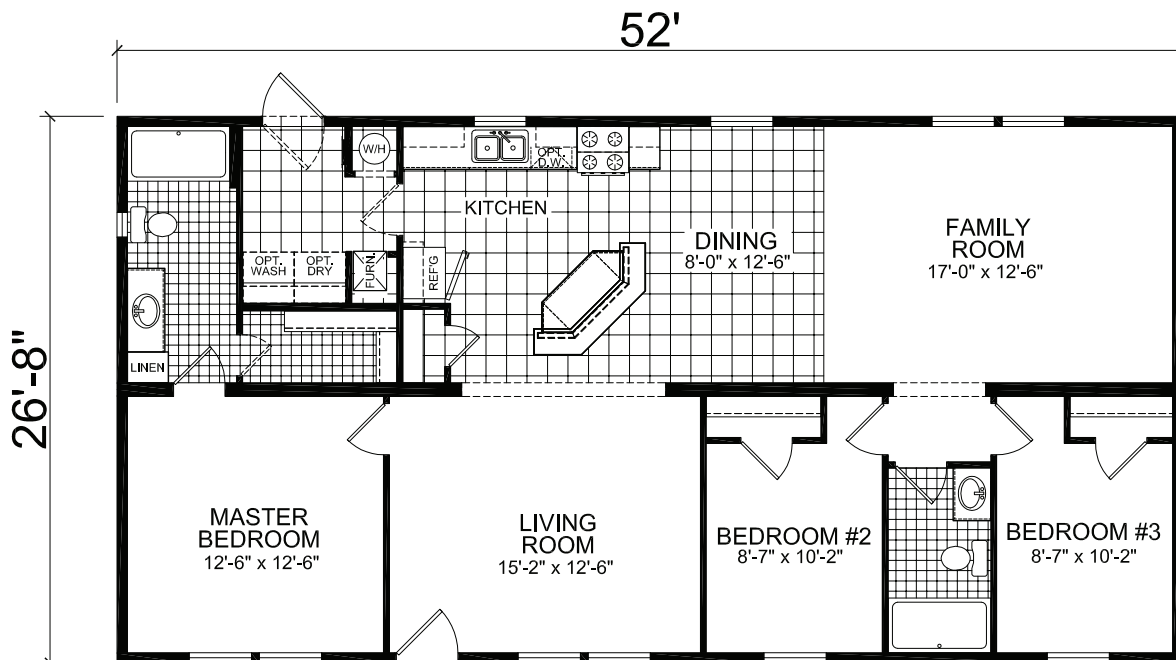
MODEL 244

1387 sq.ft. | 3 Bedroom, 2 Bath | 28' X 56'



MODEL 245

1556 sq.ft. | 3 Bedroom, 2 Bath | 28' X 56'



STANDARD FEATURES

EXTERIOR CONSTRUCTION

- Roof Trusses - 20 lb 24" OC
- Double 4" Vinyl Dutchlap Siding
- Shingled Roof 3-Tab 25-Year Shingles with Ridge Vent
- Georgia-Pacific Structure Backer
- Metal Soffit & Fascia, Drip Edge
- 6" Gable End Overhangs
- 19/32" T & G OSB Floor Decking
- Floor Joists 2"x6" - 16" OC
- 7'-6" Sidewalls with Vaulted Ceiling - Sectional
- 8'-0" Sidewalls with Flat Ceiling - Single
- 2" X 6" Sidewalls 16" OC with R-19 Insulation
- R-22 Roof Insulation
- R-13 Floor Insulation
- Hitch-end Treatment with Pediment - Single
- Dormer Treatment with Pediment at Front Door - Sectional
- Marriage Line Gasket - Sectional
- House Wrap
- Recessed Frame (Sectional) & Removable Hitch
- Double 2" x 4" Marriage Wall - Sectional
- All HUD Fees and Seals
- Raised Panel Vinyl Shutters Front Door Side - Sectional
- Raised Panel Vinyl Shutters Front Door Side & Hitch-End - Single
- 36" 2-lite Steel Front Door with Storm & Deadbolt
- 36" Cottage Rear Door with Deadbolt
- Low-E Vinyl Dual Glazed Single Hung Windows - No Grids

INTERIOR

- 5/16" Vinyl Wall Gypsum Throughout
- 1 3/4" Flat Window & Door Casing
- 1 3/4" Flat Ceiling Cove with No Base Molding
- 5/16" Window & Door Jam with No Reveal
- 1/2" Finished Drywall "Stomped" Ceiling
- 14 oz. Plush Carpet with Tack-strip Installation
- 6 lb. Rebond Carpet Pad
- Vinyl Floor In Kitchen, Utility, Bathrooms
- Choice of 4 Decors Selections Available
- Level I Drapery Package (Valances Only)
- Accent Wall(s) Where Applicable - No Charge
- White 6-Panel Interior Doors Throughout
- Wire Shelving In Closets & Pantries
- Walk-in Closets are Finished

LIGHTING

- Coach Light at Front & Rear Exterior Door
- Paddle Fan with Light in Living Room
- (4) Can Lights in Kitchen Area
- Cone Dinette Light in Dining Room Area
- Globe Ceiling Light Fixtures in Bathroom Vanity(s)
- 100 Amp. Electrical Service
- Switched Receptacle in All Bedrooms
- Switched Receptacle in Living Room

BATHROOMS

- 3-Piece 60" Bathtub(s)
- Shower Curtain with Rod on All 60" Bathtubs
- Porcelain Bathroom Sink(s)
- Beveled Bath Vanity Mirror(s) in All Bathrooms
- Dual Knob Faucets in Bathroom Sinks, Bathtubs & Showers
- 36" Vanity Height Throughout
- Power Lighted Vent for Bathrooms
- Self-edge Laminate Countertop with Backsplash

KITCHEN

- Black 18 Cubic Foot 2-Door Frost Free Refrigerator
- Black 30" Dlx. Gas or Electric Range with Pilot Light (Must Option in 200 Amp Service with Electric Range)
- Black Accented Wood Range Hood over Range Area
- Dual Knob Faucet at Sink
- Deep-well Stainless Steel Sink
- Self-edge Laminate Countertop with Backsplash.

CABINETRY

- Wood Frame Beaded Cabinet Doors at Kitchen & Bath(s)
- Accented Storage Boxes Where Applicable
- 1 7/8" Flat Molding on Overhead Kitchen Cabinetry
- Wrapped MDF Stiles at All Kitchen & Bathroom Cabinets with Toe Kick Accent Where Applicable
- Round Black Cabinet Pulls
- Adjustable Hidden Cabinet Door Hinges
- Side Mount Roller Guides
- Vented Wire Shelf at Washer/Dryer Area
- Storage Box Over Refrigerator
- Plant Made Medicine Cabinet in Hall Bath Toilet - Sectional Plan Only

UTILITIES

- Shut-off Valves on All Sinks & Toilets
- 30 Gallon Electric Water Heater with Pan
- Smoke Detectors Per Code
- AG Gas Furnace Sized to Home
- Plumb Wire & Vent for Washer & Dryer

Note: Champion Homes reserves the right to make changes at any time in prices, colors, materials, equipment, specifications and models and also to discontinue models without notice and/or obligation. All dimensions are nominal. Data shown is basic information for the prospective buyer effective at time of issuance of this material. Retailer will provide complete up-to-date information on available equipment, specifications, etc. not shown or noted here. Items referred to as being available or optional are at extra costs.

BUILT BETTER FROM THE INSIDE OUT.

We have a home for everyone, no matter what stage of life you're in. Whether you're a first-time homebuyer, a growing family needing a larger home, or an empty nester wanting to downsize, we have a factory-built design to fit your lifestyle. From active young families on the go to retirees ready to relax and enjoy, our vast selection of floor plans, home décors and options give you the design choices you want to create your dream home.



QUALITY YOU EXPECT.

Champion Home Builders, Claysburg, PA, is located in South Central Pennsylvania and has been producing affordable, innovative manufactured housing for the Northeastern United States market since 1964. Our outstanding network of retailers extends as far north as Maine, and as far south as Virginia.

CHAMPION 

Claysburg, Pennsylvania

2551 Champion Drive
Claysburg, PA 16625

www.chbclaysburg.com

07122500