



PARAMOUNT COLLECTION

ATLANTIC[®]
HOMES



MADE FOR LIVING

A heritage of excellence.

Atlantic Homes has been providing families with quality homes for generations. With a unique combination of state-of-the-art manufacturing and high-quality building materials, we provide the highest value in housing. We have earned our reputation by consistently delivering more than our customers might expect. More innovative quality features. More home styles. More flexible floor plan designs. More helpful customer service. And, most of all, more home for the money.

For you. For life.

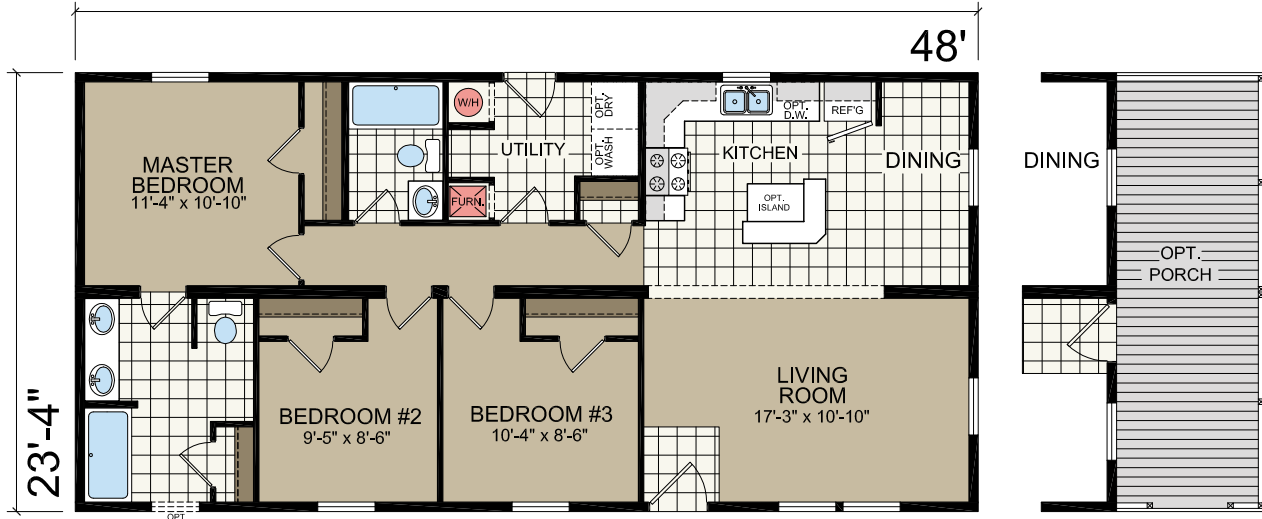
Beyond just building you a house, we're committed to providing you and your family with a home to make memories in that will last a lifetime. Somewhere you can feel secure. A place you can call your own. A home that fits your lifestyle and has your own personal touch. Whether you're an active young family constantly on the go or empty nesters ready to simplify, just relax – we have a home that's right for you.

Lifestyle. Choice.

Our vast selection of floor plans, color choices and options give you the freedom to express your personal style and fit your home around your life. And our online Kitchen Designer will help you visualize the kitchen of your dreams.

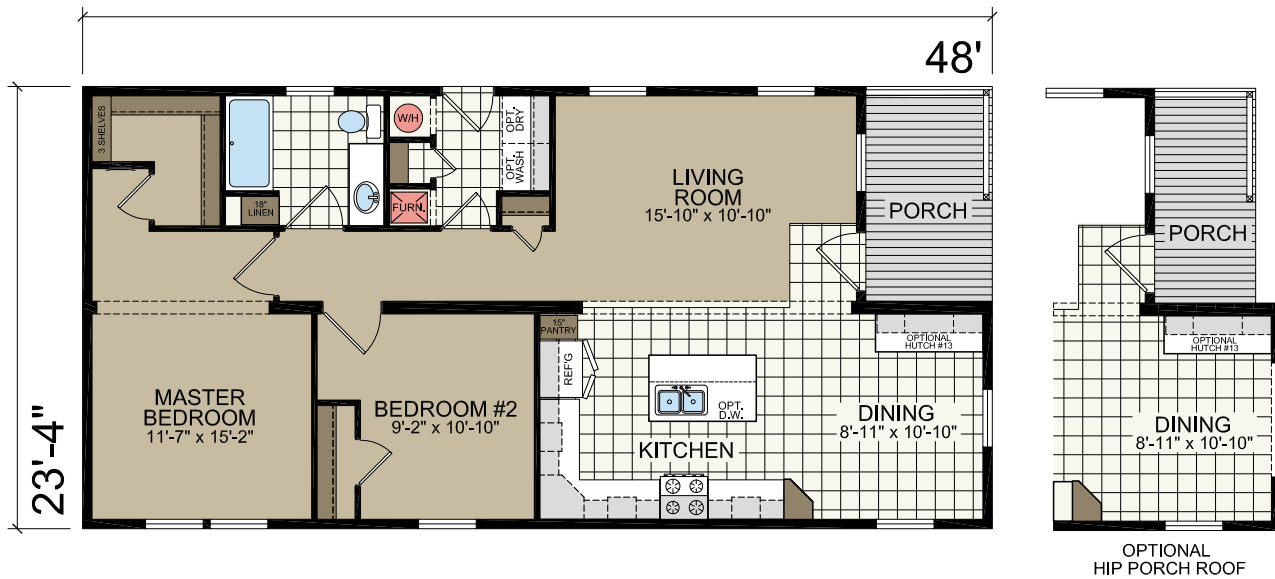
B-74852

24' x 48'
3 bed-2 bath
1120 sq. ft.



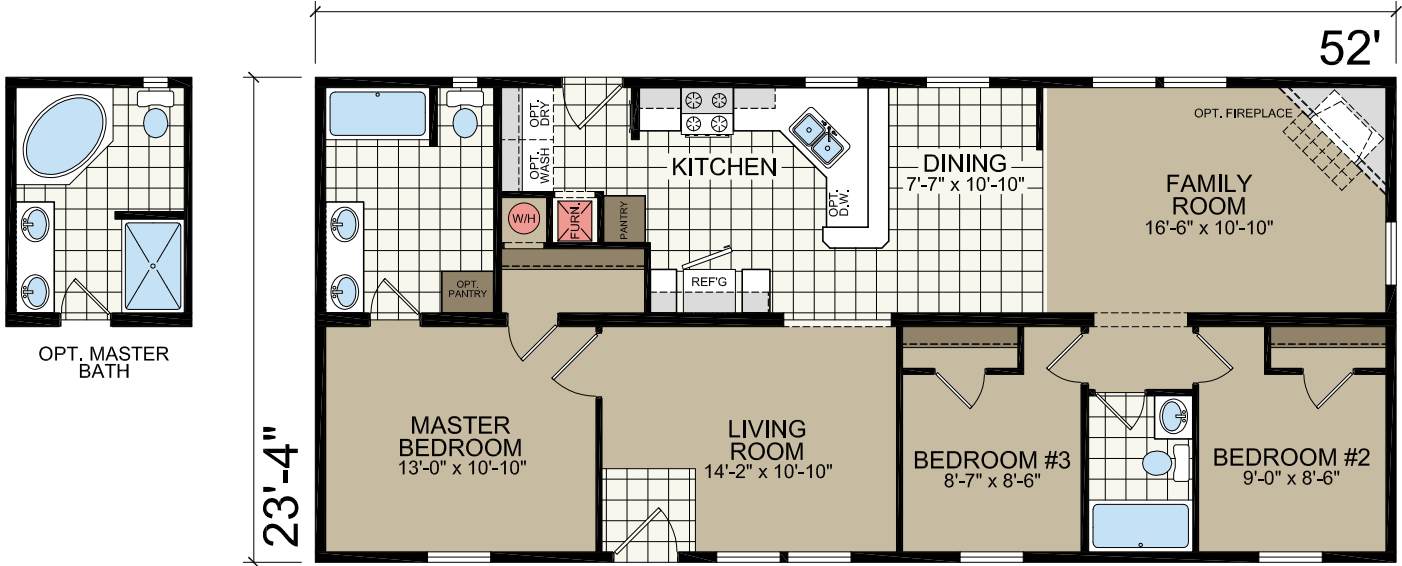
B-74851

24' x 48'
2 bed-2 bath
1120 sq. ft.



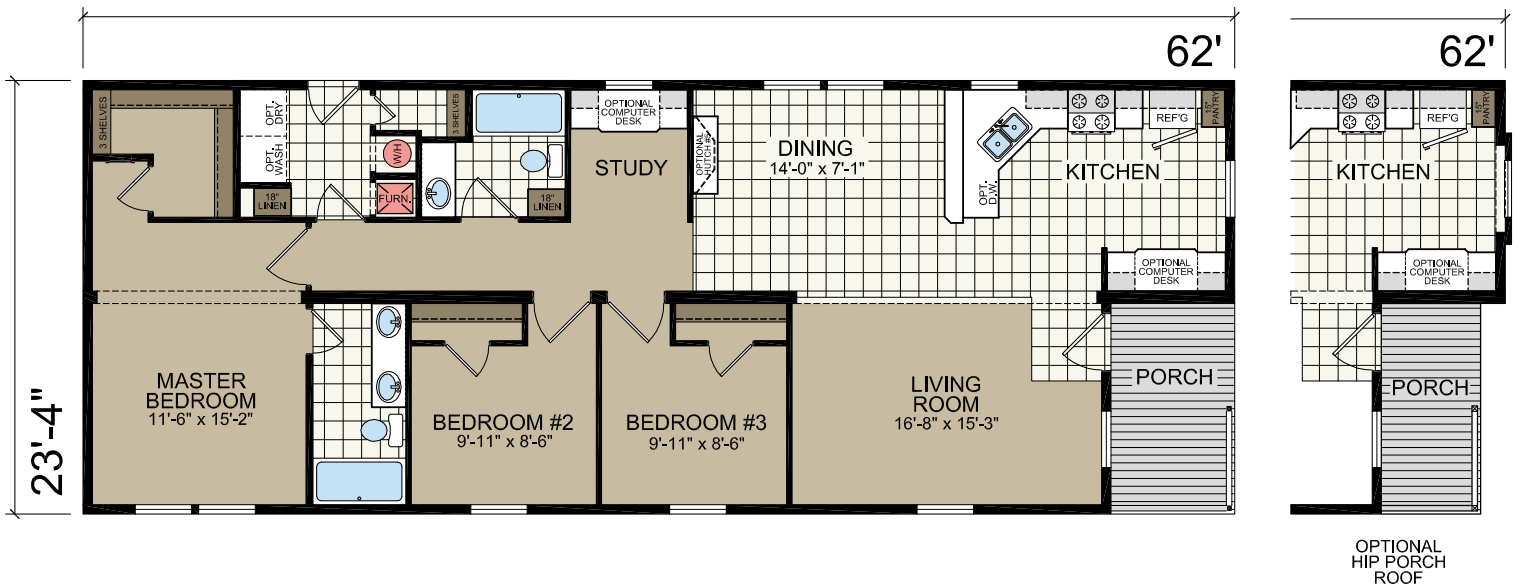
B-75254

24' x 52'
3 bed-2 bath
1213 sq. ft.



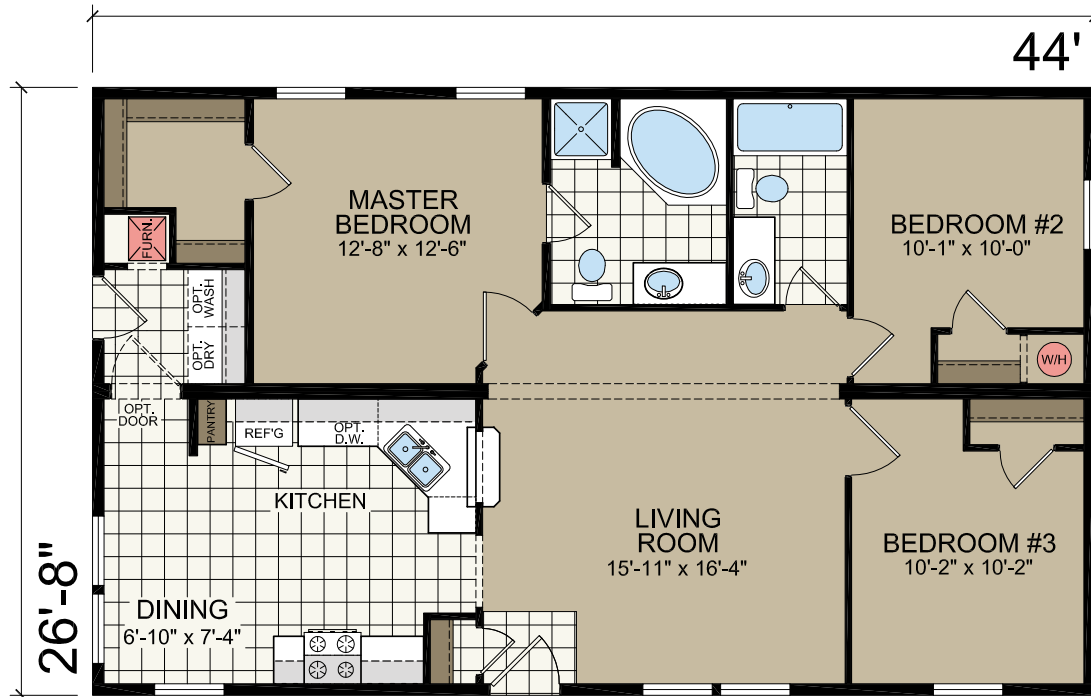
B-76252

24' x 62'
3 bed-2 bath
1446 sq. ft.



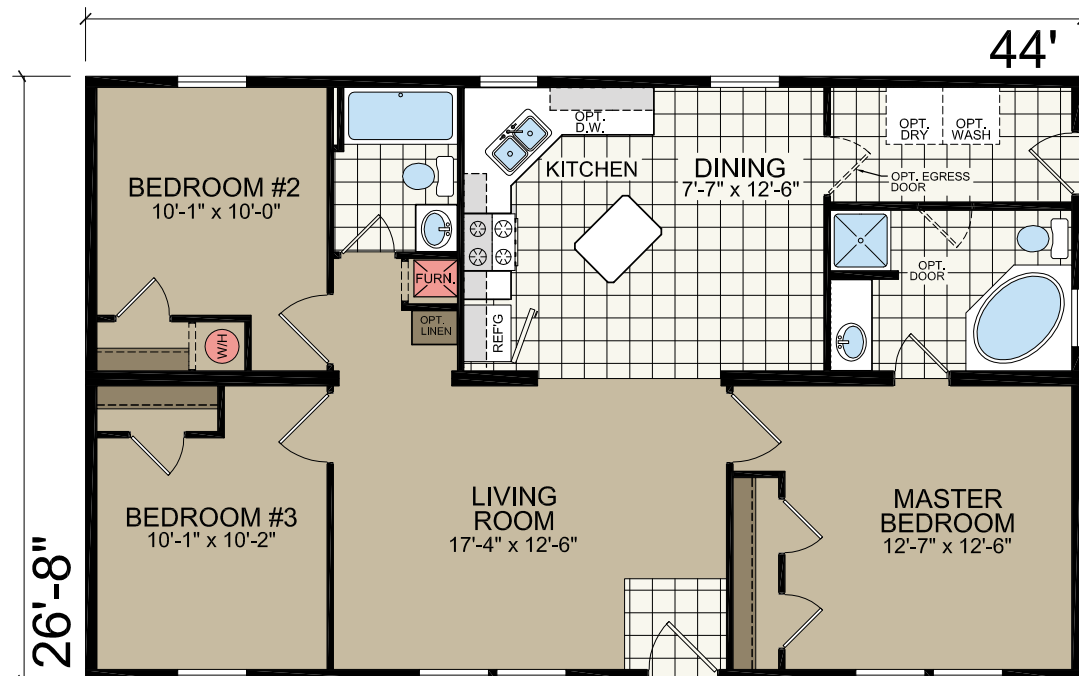
A-74450

28' x 44'
3 bed-2 bath
1173 sq. ft.



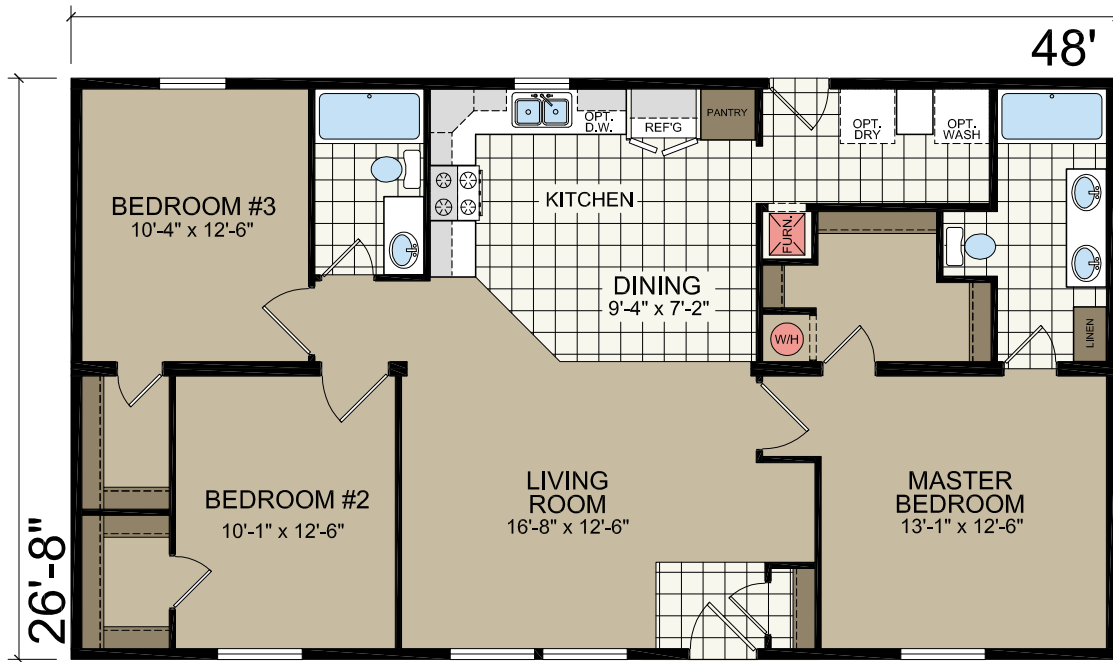
A-74451

28' x 44'
3 bed-2 bath
1173 sq. ft.



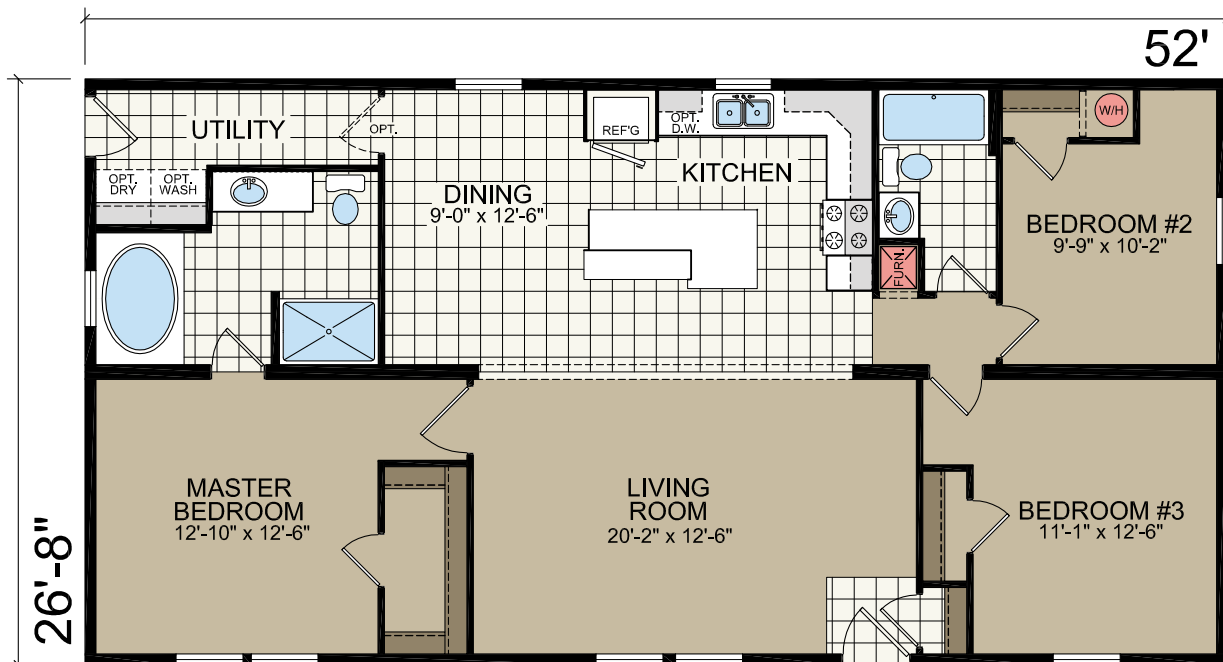
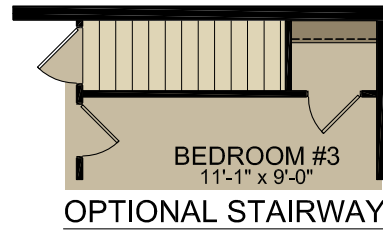
A-74850

28' x 48'
3 bed-2 bath
1280 sq. ft.



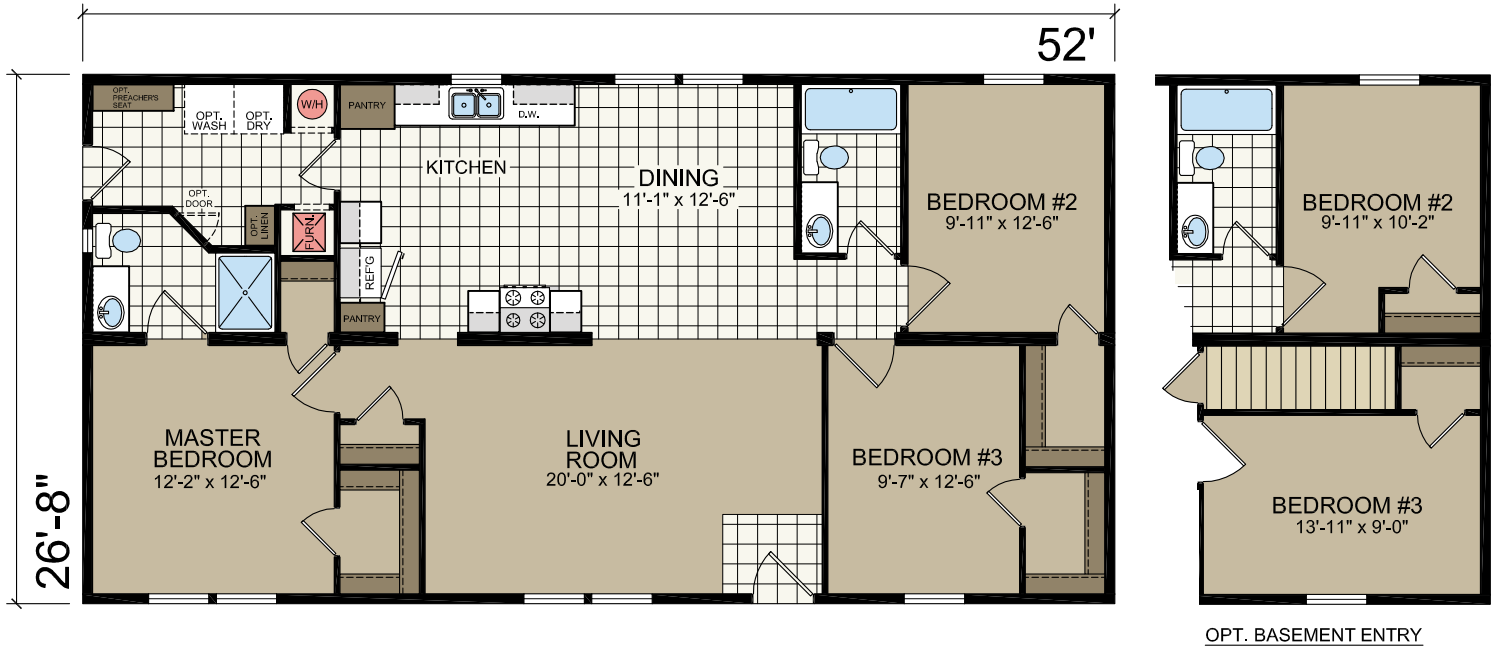
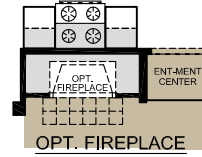
A-75252

28' x 52'
3 bed-2 bath
1387 sq. ft.



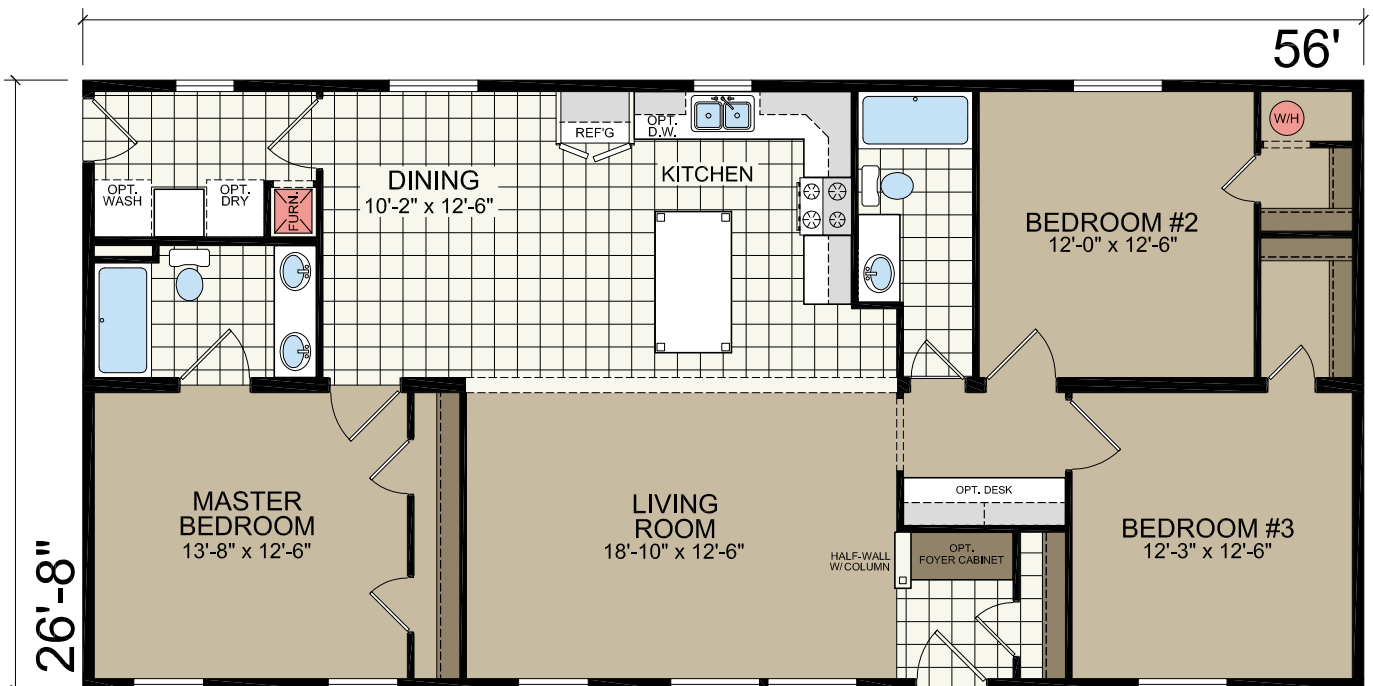
A-75253

28' x 52'
3 bed-2 bath
1387 sq. ft.



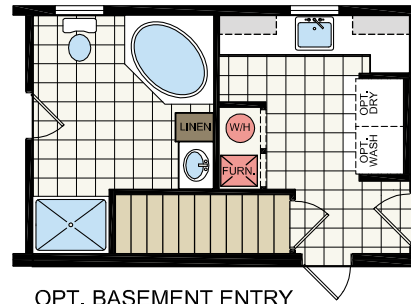
A-75652

28' x 56'
3 bed-2 bath
1493 sq. ft.

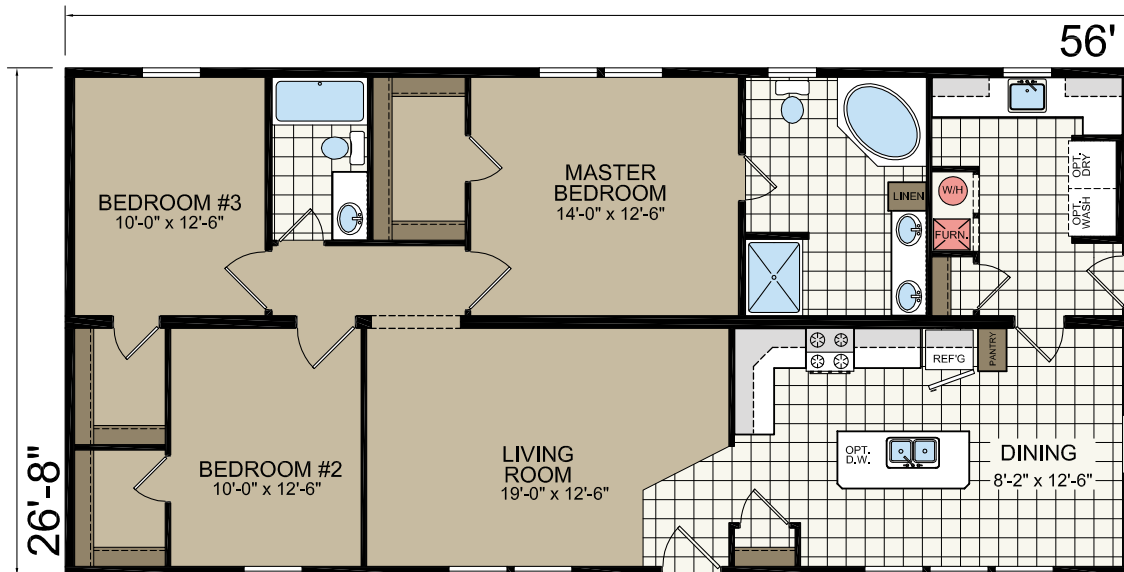


A-75651

28' x 56'
3 bed-2 bath
1493 sq. ft.

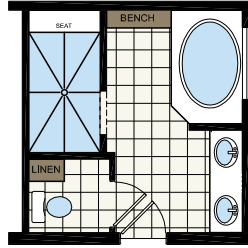


OPT. BASEMENT ENTRY

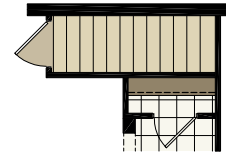


A-76051

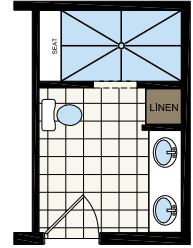
28' x 60'
3 bed-2 bath
1600 sq. ft.



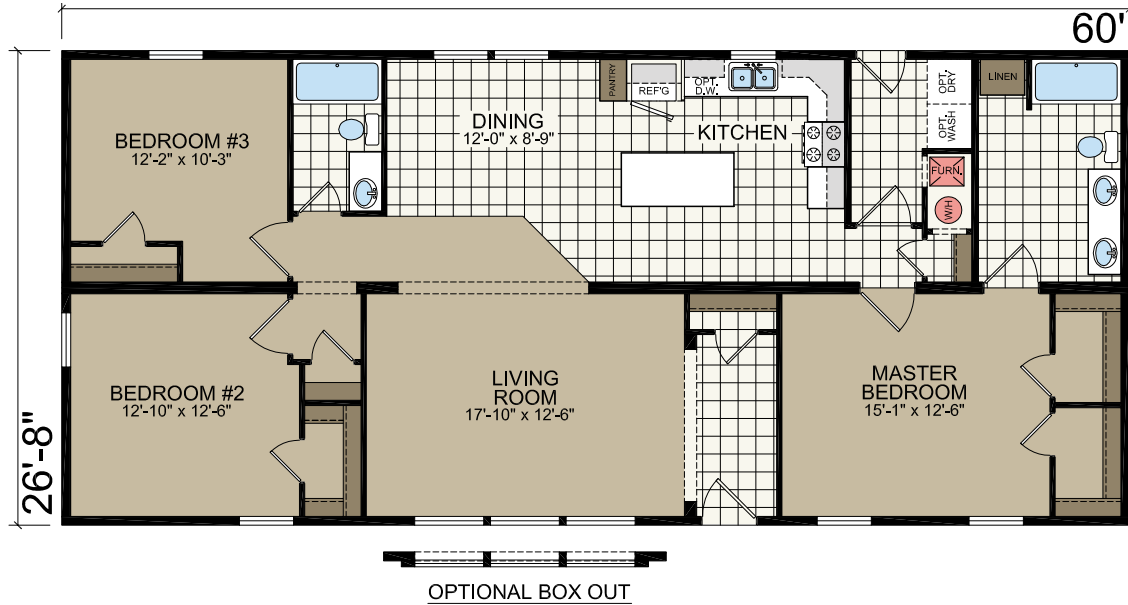
OPT. AMAZON BATH - 64' VERSION



OPTIONAL STAIRS

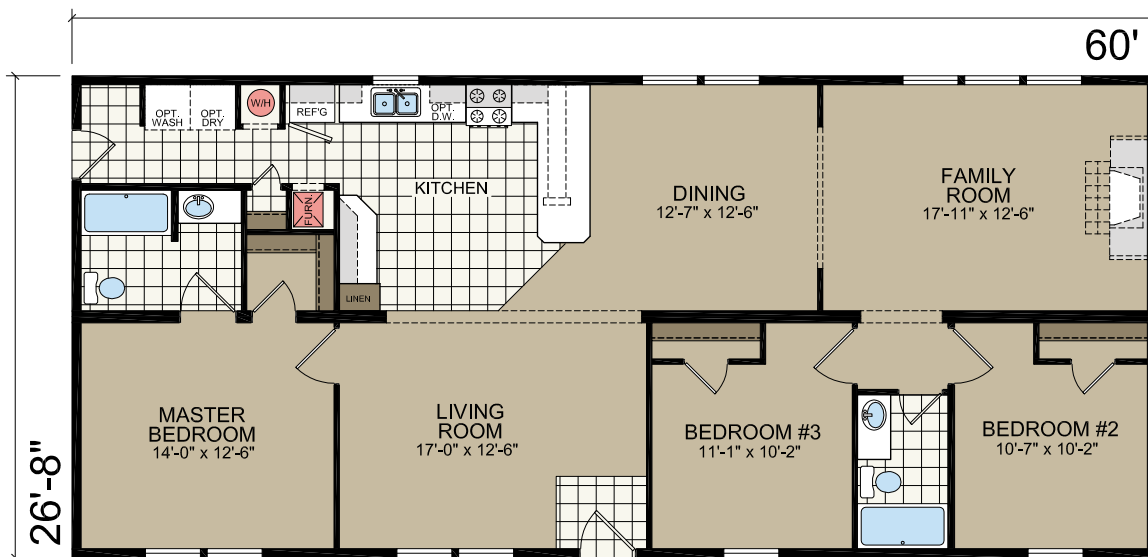


OPT. MINI AMAZON BATH



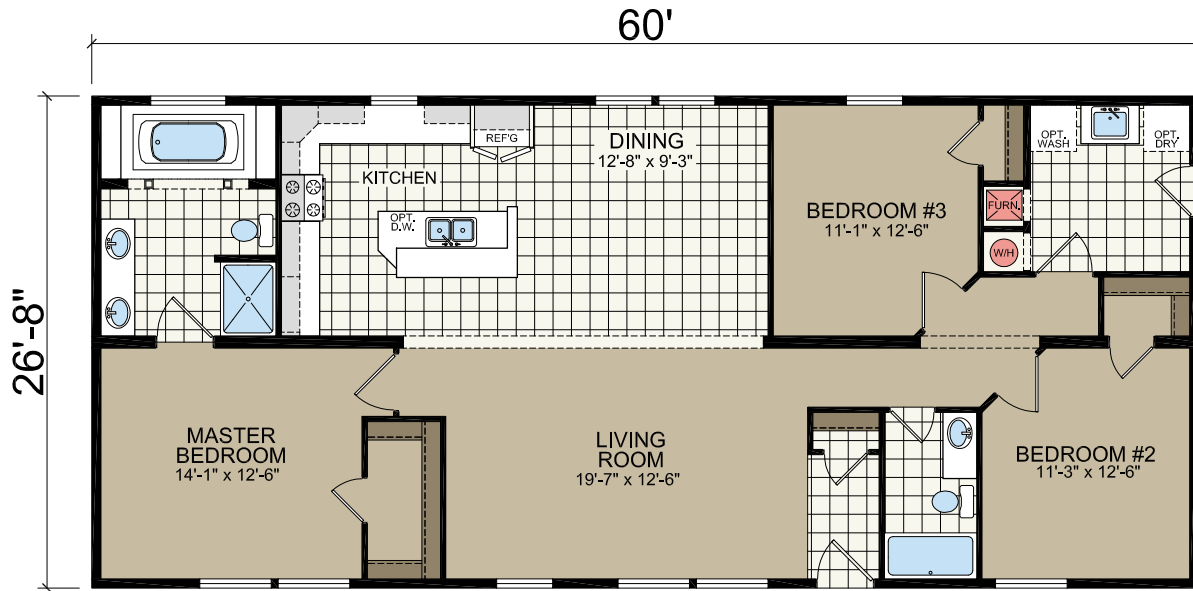
A-76056

28' x 60'
3 bed-2 bath
1600 sq. ft.



A-76057

28' x 60'
3 bed-2 bath
1600 sq. ft.

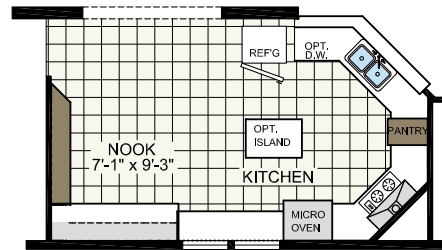


A-76250

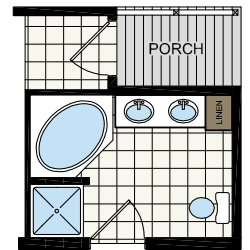
28' x 62'
3 bed-2 bath
1653 sq. ft.



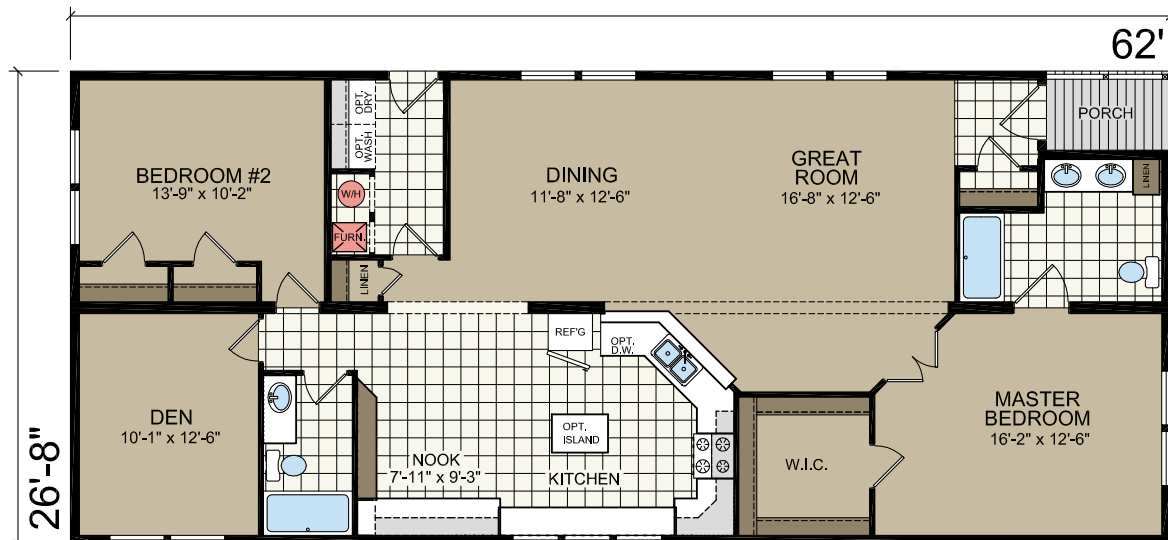
OPT. BEDROOM #3



OPT. ULTIMATE KITCHEN

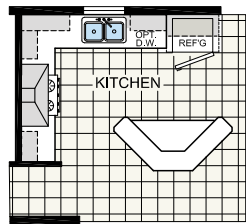
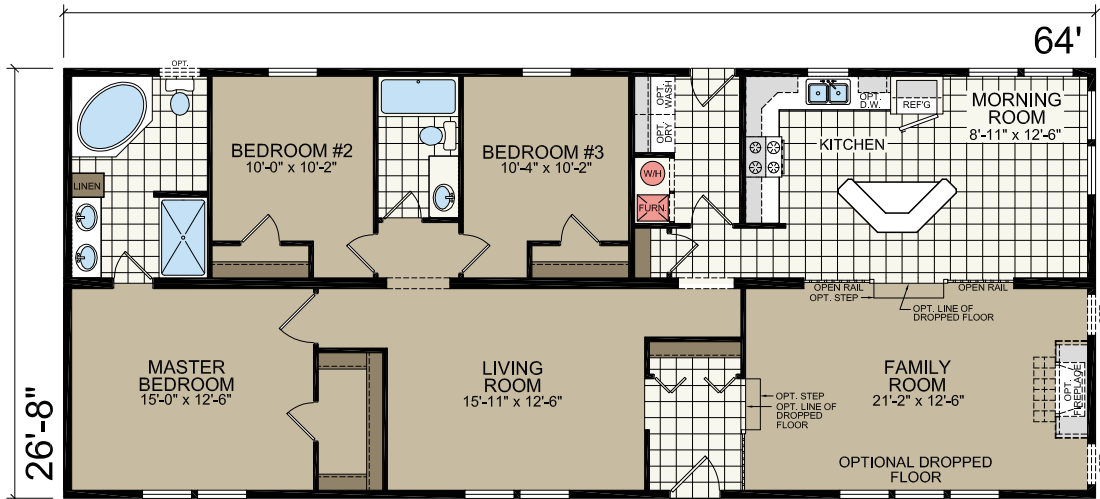


OPT. MASTER BATH

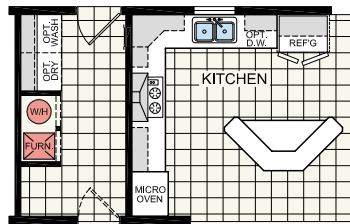


A-76452

28' x 64'
3 bed-2 bath
1707 sq. ft.



OPT. COUNTRY KITCHEN

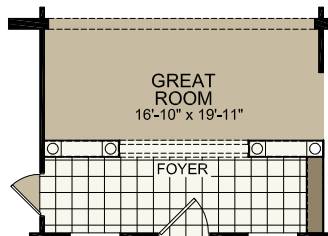
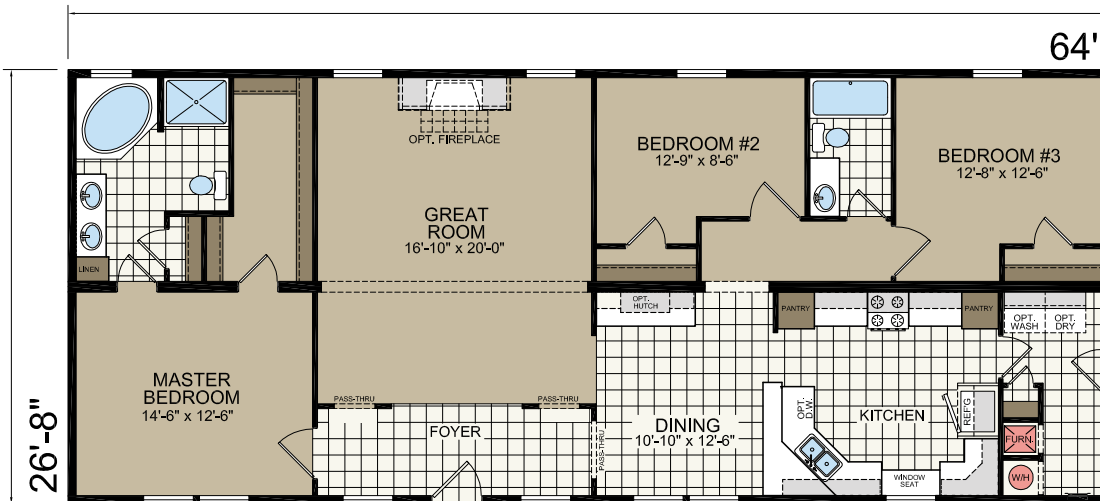


OPT. ULTIMATE KITCHEN

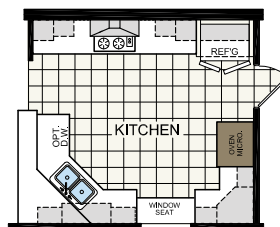


A-76454

28' x 64'
3 bed-2 bath
1707 sq. ft.



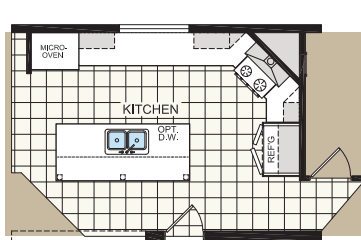
OPT. COLUMN FOYER



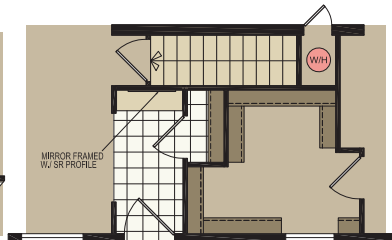
OPT. ULTIMATE KITCHEN

A-76652

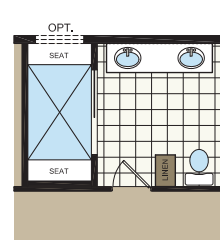
28' x 64'
3 bed-2 bath
1760 sq. ft.



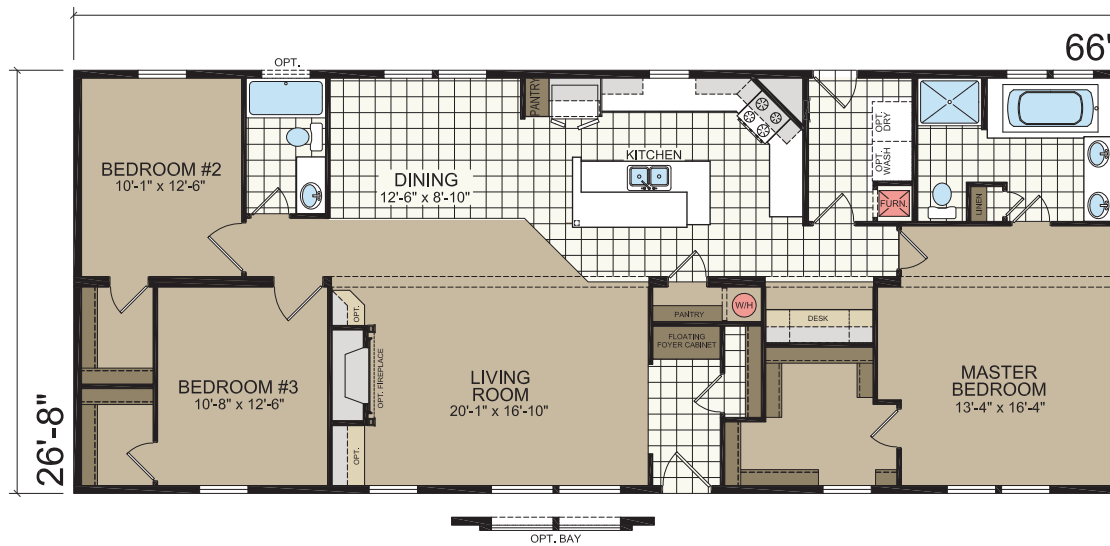
OPT. NICE KITCHEN



OPT. BASEMENT ENTRY

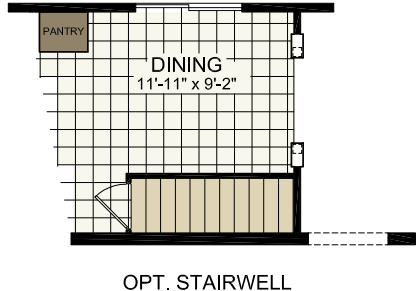
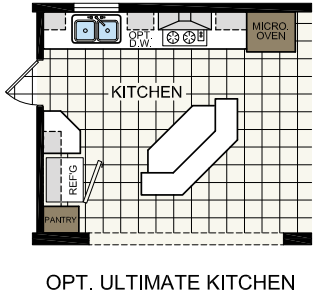
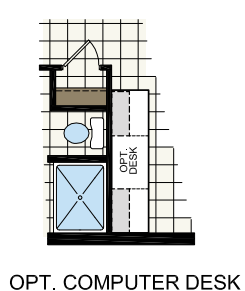
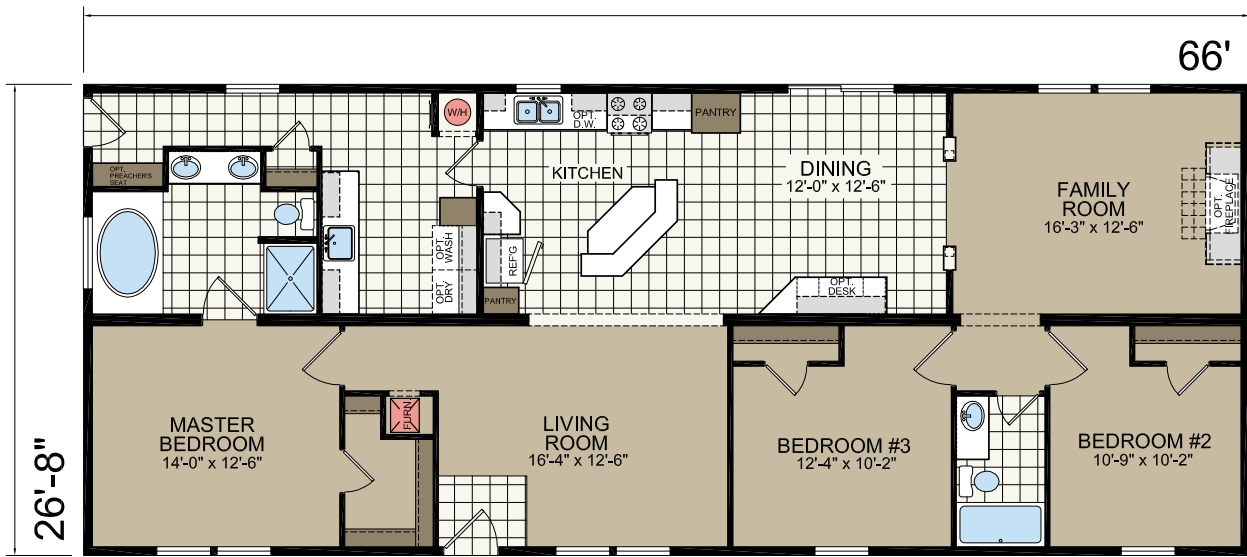


OPT. MASTER BATH



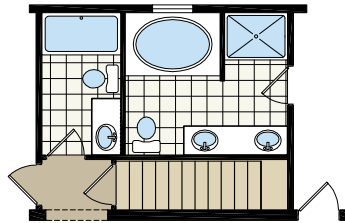
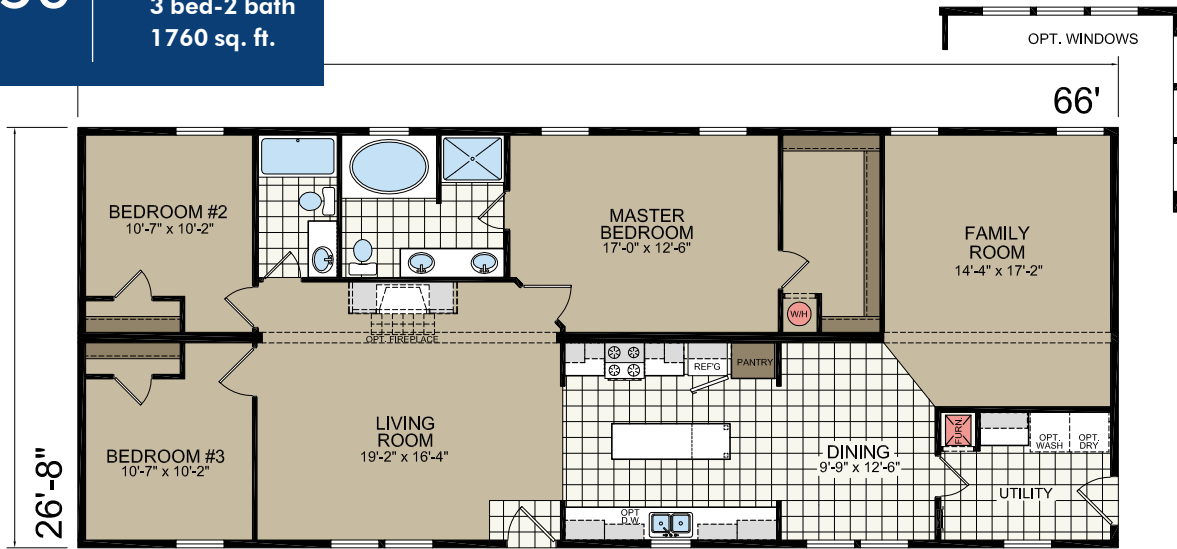
A-76651

28' x 66'
3 bed-2 bath
1760 sq. ft.

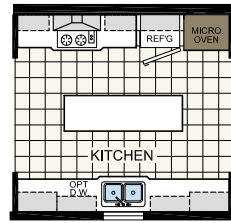


A-76650

28' x 66'
3 bed-2 bath
1760 sq. ft.



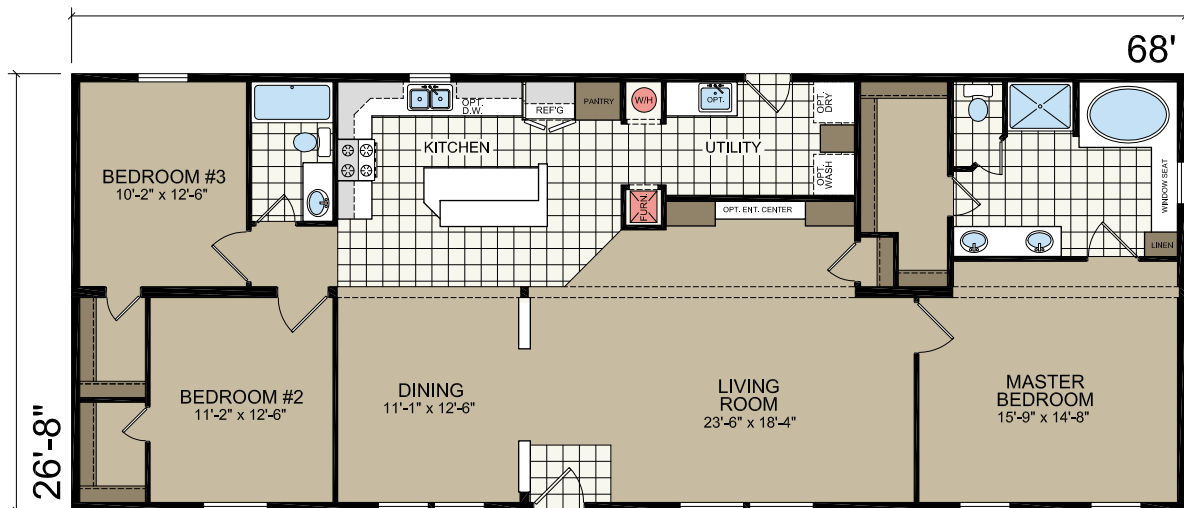
OPT. BASEMENT ENTRY



OPT. ULTIMATE KITCHEN

A-76850

28' x 68'
3 bed-2 bath
1813 sq. ft.

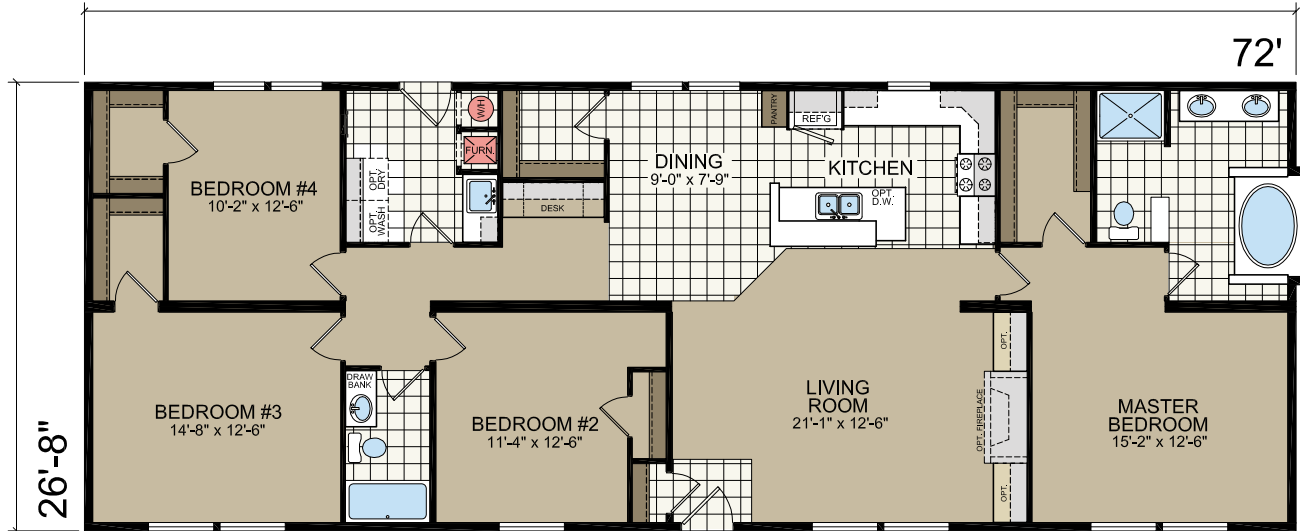


A-77250

28' x 72'
4 bed-2 bath
1920 sq. ft.

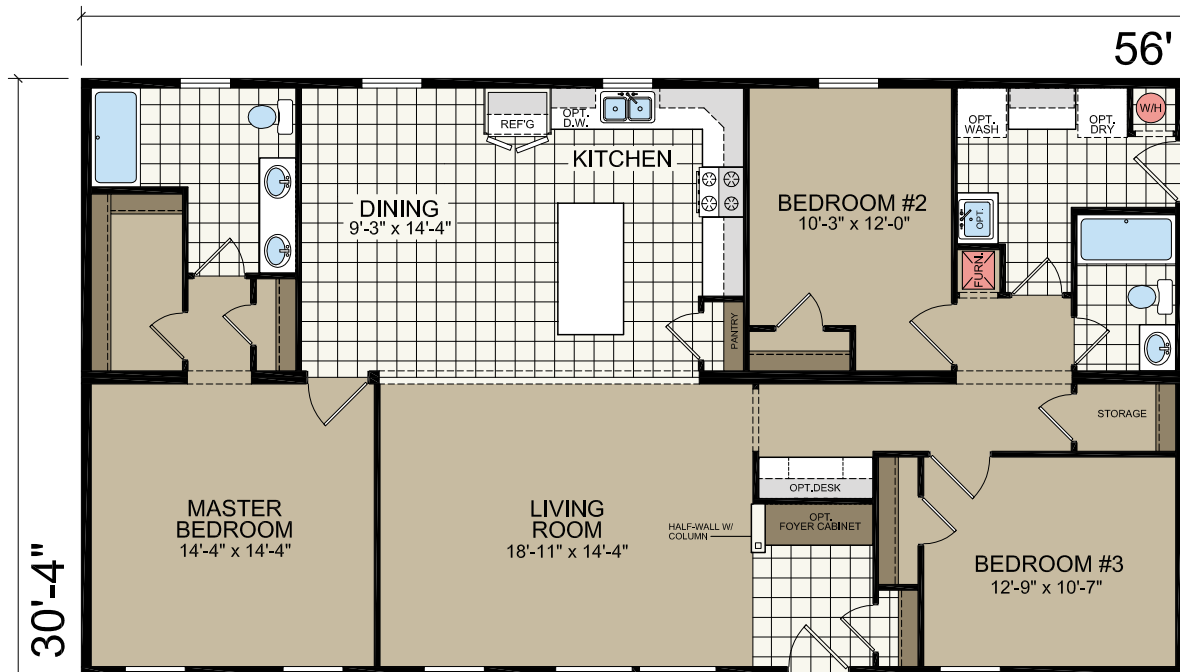


OPTIONAL STAIRS



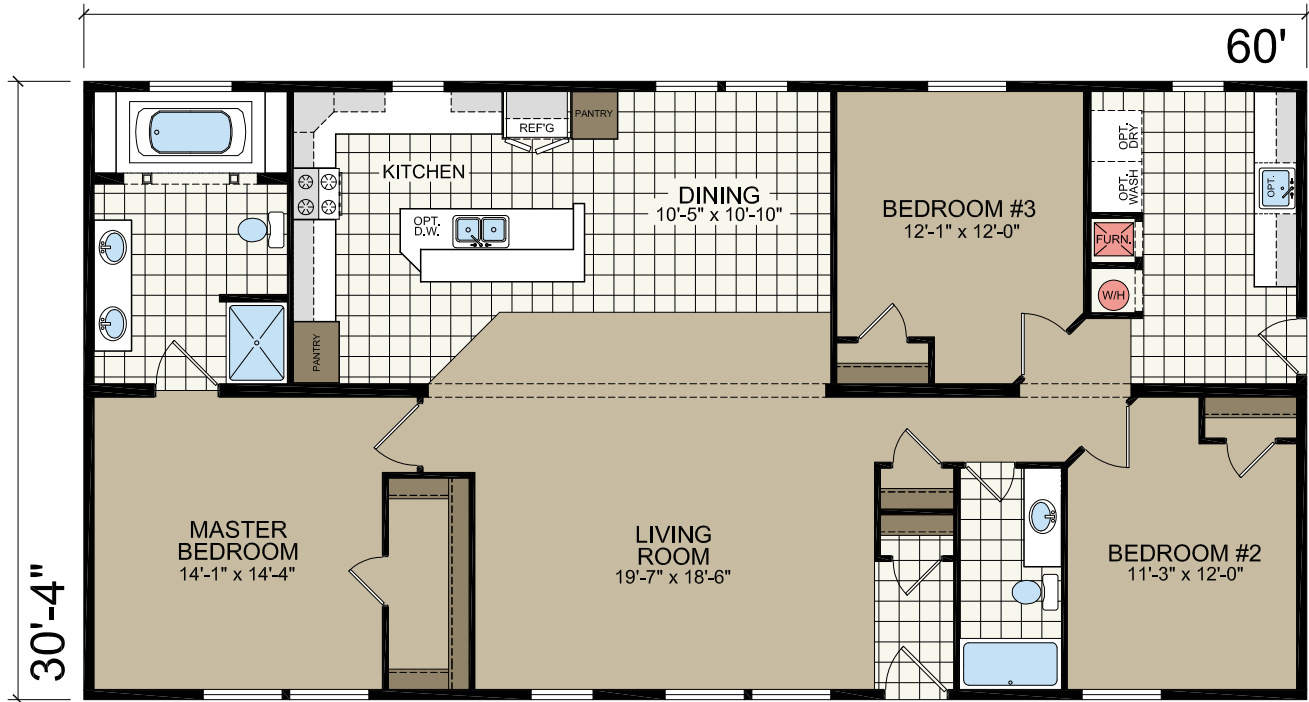
E-75654

32' x 56'
4 bed-2 bath
1698 sq. ft.



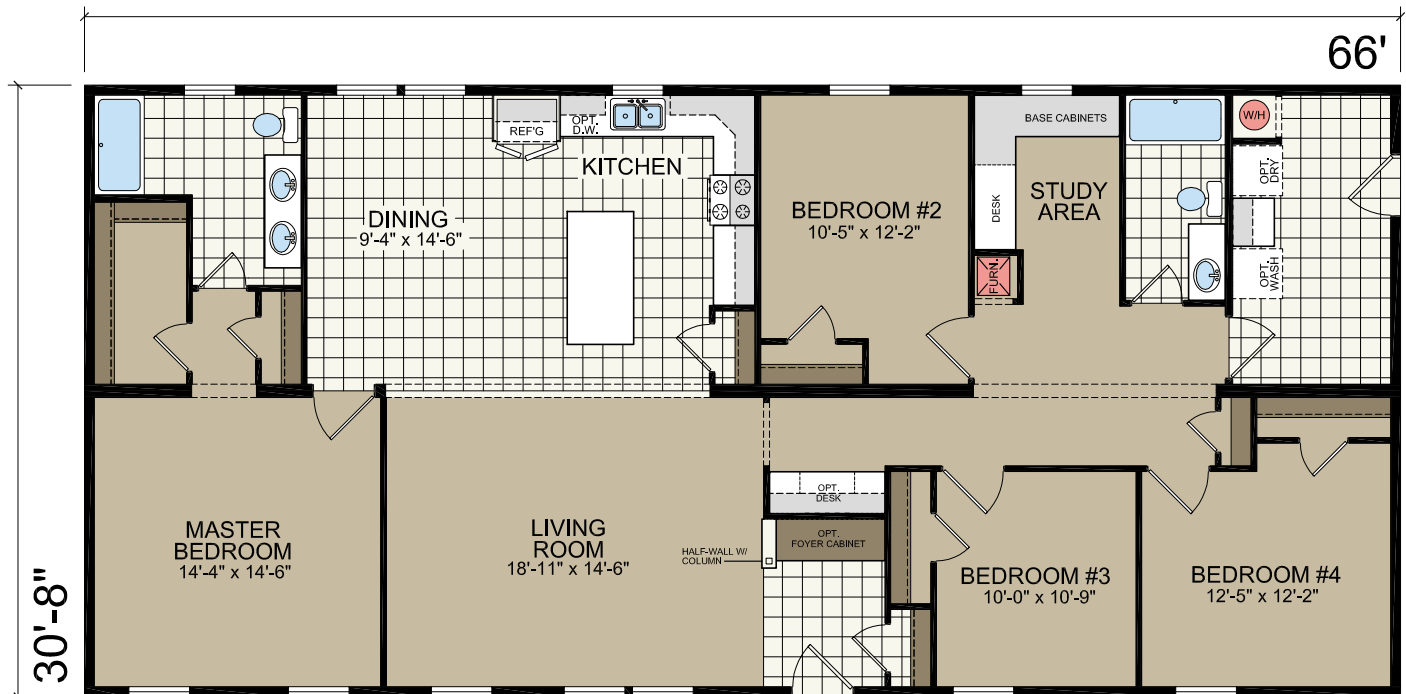
E-76054

32' x 60'
3 bed-2 bath
1820 sq. ft.



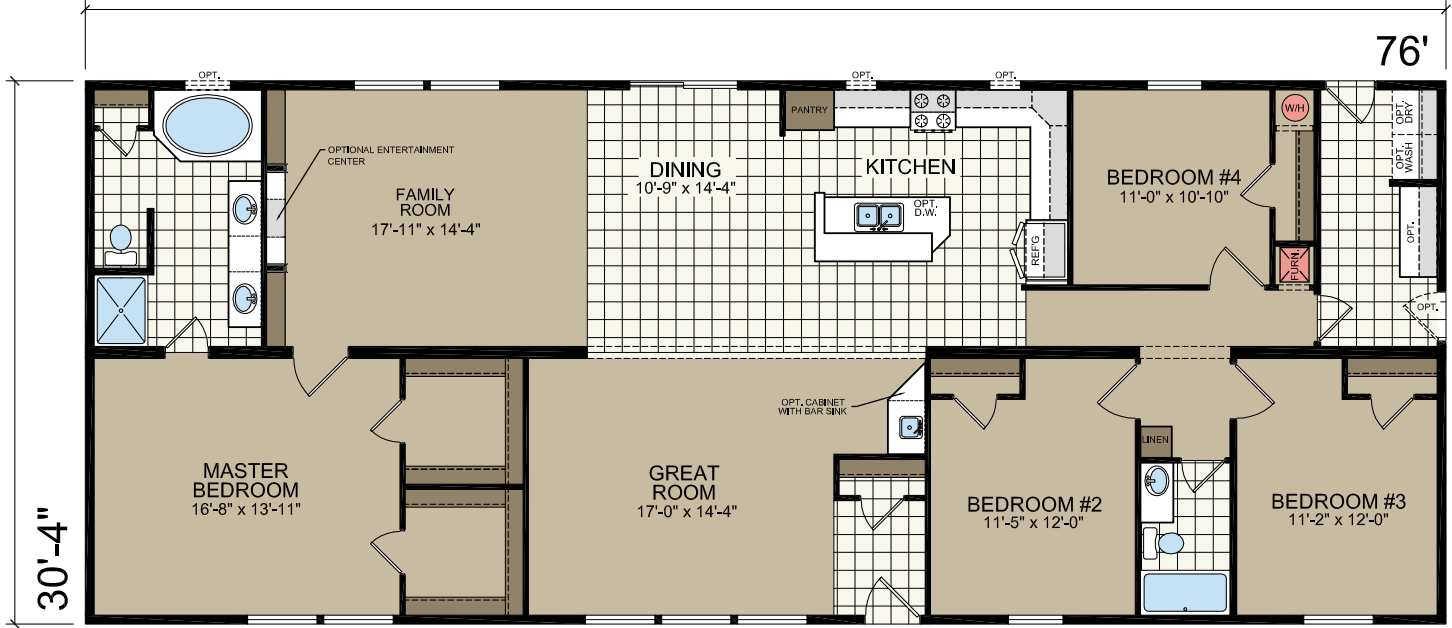
E-76654

32' x 66'
4 bed-2 bath
2024 sq. ft.



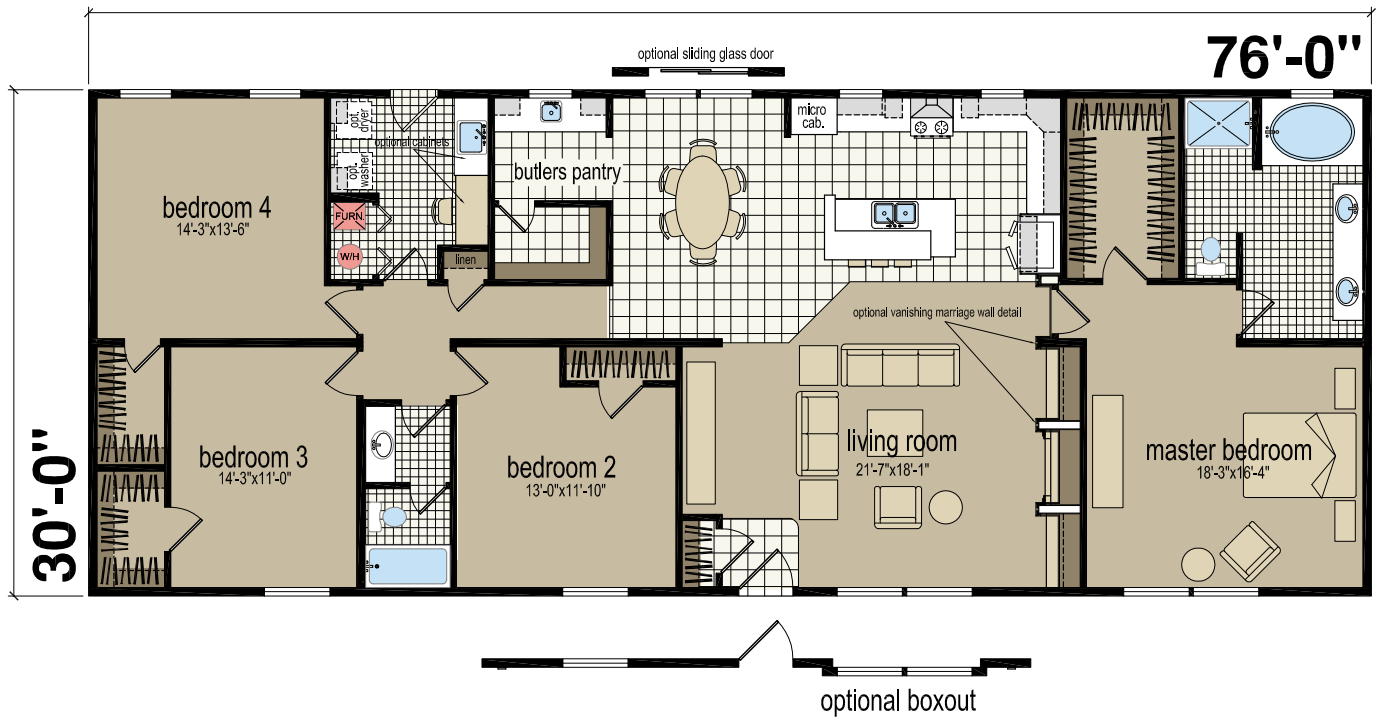
E-77652

32' x 76'
4 bed-2 bath
2305 sq. ft.



E-77651

32' x 76'
4 bed-2 bath
2305 sq. ft.



ELEVATION OPTIONS



ELEVATION A



ELEVATION B



ELEVATION C

STANDARD FEATURES

Construction

- 2x6 Floor Joists 16" O.C. | Recessed Frame
- 2X6 Sidewalls 16" O.C.
- 30 lb. Roof 24" O.C.
- 8' Sidewalls | Flat Stomped Ceilings
- 7/16" OSB Sheathing with House Wrap
- Marriage Line Gasket
- 3-Piece Soffit/Fascia
- 1/2" Covered Drywall Throughout Including Closets
- Residential Molding Throughout
- Straight 4" Vinyl Exterior Siding
- Deluxe Raised Panel Shutters FDS
- Architectural Shingles with Ridge Vent
- Heat Tape Receptacle

Electric

- 200 Amp Electric Service
- GFIs in Kitchen and Baths
- New Upgraded Lighting Package
- 8 Recessed Can Lights in Kitchen
- Dome Lights in Bedrooms
- Tulip Light Bars in Bathrooms
- Hunter® Paddle Fan in Living Room
- Deluxe Chandelier in Dining Room
- Exterior Nickel Coach Lights
- Wire & Vent for Electric Dryer

Baths

- 60" 1-Piece Fiberglass Tub/Shower
- Single-Lever Anti-Scald Faucets
- 4-Cycle Shower Heads
- Towel Bar & Tissue Holders
- 36" Vanity Height | Porcelain Sinks
- Mirror with Frame at Vanity (s)
- Laminate Countertop with Crescent Edge & 3x6 Ceramic with 3 Rows Glass Backsplash
- Elongated Toilet
- Tub Overdrape

Kitchen

- 8" Stainless Steel Deep Well Kitchen Sink
- 18 Cu Ft Refrigerator - Black
- 30" Deluxe Gas or Electric Range - Black
- Power Vent Range Hood
- Ceramic Range Backsplash
- Laminate Countertop with Crescent Edge
- 3" Ceramic with 3 Rows of Glass Backsplash
- Raised Panel Wood Cabinet Doors | Solid Wood Stiles
- Drawer over Door Construction
- Crown Molding on 41" Overhead Cabinets with 36" Doors | Hidden Hinges
- Two Adjustable Shelves in Overhead Cabinets

Plumbing

- Whole House Interior Water Shut-off
- Water Shut-offs at Fixtures
- Plumb for Washer
- Perimeter Heat
- Gas Furnace
- Metal Louvered Furnace Door

Miscellaneous

- Combo Smoke/CO Detectors Per Code
- Shaw® Carpet
- 8# Carpet Pad
- Vinyl in Wet Areas & Vinyl Foyer
- 36" (Where Able) 6-Panel White Interior Doors with Lever Lock Sets
- Vented Shelves in Closets
- Overhead Cabinets with Rod & Stile at Washer/Dryer Area
- 2" Faux Blinds Throughout
- R-22 Floor Insulation
- R-19 Sidewall Insulation
- R-30 Roof Insulation
- 38" x 82" Sunburst Fiberglass Front Door (No Storm)
- 34" x 82" 9-Lite Fiberglass Rear Door (No Storm)
- Deadbolts on Exterior Doors (Keyed Alike)
- Low-E Gridded Vinyl Windows Per Plan
- Deluxe Drapery Package | Choice of Decor

ATLANTIC HOMES

Champion: Manufactured Beautifully

There's more to us than our name implies. We are a member of the Champion family of homebuilders, which has built more than 1.7 million homes for American families. Collectively, we bring decades of knowledge and experience to building you that special home and the financial strength to deliver lasting value and peace of mind.

There for you

Over the years, we've built more than just homes. We've built trust in our ability to satisfy our homebuyers' needs – and we're confident we can provide you with a home that will meet your needs and exceed your expectations.





ATLANTIC[®]
HOMES

2551 Champion Drive
Claysburg, PA 16625

CHAMPION[®]

MANUFACTURED BEAUTIFULLY[™]